

PCET's

PBS PUNE BUSINESS SCHOOL

THE TETRAHEDRON FOR YOUR SUCCESS



PIMPRI CHINCHWAD EDUCATION TRUST
A Trusted Board in Education Since 1980..







INDEX

About PBS	10
Infrastructure	23
Admission Process	31
Academics at PBS	34
Teaching Resources	45
Certification Courses	46
International Collaborations	49
Life at PBS	53
Team at PBS	52
Student Initiative	55
Get in touch	60



Know our Pillars

OUR INSPIRATION



LATE. SHRI. SHANKARRAO B. PATIL
FOUNDER PRESIDENT,
PIMPRI CHINCHWAD EDUCATION TRUST



LATE. SMT. LILATAI SHANKARRAO PATIL
EX PRESIDENT,
PIMPRI CHINCHWAD EDUCATION TRUST

TRUSTEE MEMBERS



SHRI. DYANESHWAR LANDGE
CHAIRMAN



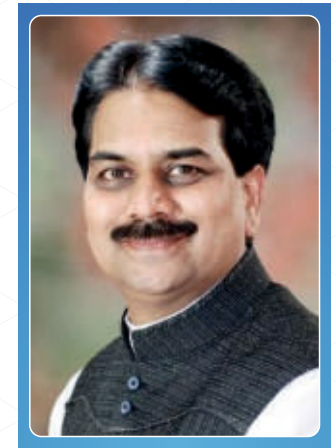
MRS. PADMATAI BHOSALE
VICE CHAIRPERSON



SHRI. VITTHALRAO KALBHOR
SECRETARY, PCET



SHRI. SHANTARAM GARADE
TREASURER, PCET



SHRI. HARSHVARDHAN PATIL
TRUSTEE MEMBER



Know our Pillars

GOVERNING BODY MEMBERS



CA. PRAMOD JAIN
CHARTERED ACCOUNTANT, INSOLVENCY
PROFESSIONAL AND REGISTERED
VALUER INTERNATIONAL CORPORATE TRAINER.
MOTIVATIONAL SPEAKER AND AUTHOR



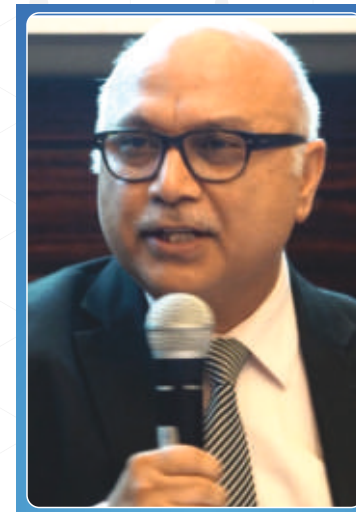
MR. GK PILLAI
DIRECTOR AND ADVISOR
WALCHAND NAGAR INDUSTRIES
LTD., PUNE



MR. VINOD BIDWAIK
CHRO & VP-HR ALFA LAVAL,
REGION INDIA, MIDDLE EAST
AND AFRICA



DR. SANTOSH BHAVE
DIRECTOR - HR & IR, BHARAT
FORGE LTD.O



MR. BHUPENDER KUMAR SETHI
ADVISOR- FINOLEX CABLES
LIMITEDO



DR DILIP DESHPANDE
ENTREPRENEUR & CORPORATE
TRAINER

FROM THE EXECUTIVE DIRECTOR'S DESK

Corporate India is on a continuous lookout for skilled management professionals who would accept challenges in an ever-changing economic environment. Holistic management education in our country continues to be the necessity of businesses. Therefore, it's essential for the management institutes to deliver quality education to create the leaders of tomorrow. Pune Business School under the Pimpri Chinchwad Educational Trust (PCET) works towards developing leaders, managers, and entrepreneurs of the future.

The lush green sprawling campus, sacred ambience with world class infrastructure of our campus invites you to the most unique experience of quality learning in a multi-dimensional and participatory manner. The students are exposed to the best training in Marketing, Finance and Human Resource Management.

PGDM Students will gain live-projects' exposure and deep industry interactions through the latest pedagogy keeping ahead of Industry requirements. Numerous industry-academia interactions will definitely enrich the unique PGDM Program.

Taught by rich experienced faculty drawn from various leading industry and academia institutions, the students would march into corporate India with confidence.



DR. GIRISH DESAI

EXECUTIVE DIRECTOR
PIMPRI CHINCHWAD EDUCATION TRUST (PCET)

CRAFTING DESTINIES WITH CONSTRUCTIVE EDUCATION!

“Today Corporate India is emerging with new business and career opportunities. Recent challenges worldwide have brought the global businesses into a rethinking mode. Some businesses have been affected immensely, while others to a lesser extent. Nevertheless, new businesses and business models have emerged.

All this calls for changes in business education, both in terms of knowledge and skills being imparted. This is the new era of management education. We at Pune Business School have modeled our management education in such a way that the students could boldly face the changes and triumph over the challenges in future corporate India.

Our curriculum is geared towards unleashing corporate warriors of tomorrow. At Pune Business School we are launching a Centre for Business Excellence so that the best possible practices needed today could be imparted to the future managerial talent of Corporate India.

The challenging business environment of today needs enterprising managers. The focus of Pune Business schools would be to develop the entrepreneurial edge in the management students. At PBS our business education is practical and incorporates the concept of design thinking.

I welcome you to the new era of management education at Pune Business School and change your destiny!”



DR. GANESH RAO

DIRECTOR
PUNE BUSINESS SCHOOL (PBS)

“TEACH ME AND I’LL REMEMBER, INVOLVE ME AND I’LL LEARN!”

“You are ambitious: You want to make a difference in the world and you believe in the power of business as a means to do so. You are highly curious to know more about yourself, others and the world we live in. You have the courage to defend your vision and make it become reality. You are driven to inspire and empower others to achieve beyond expectations. You are ready to join a select group of like-minded people. You are ready for the PCET’s Pune Business School’s (PBS) PGDM Program.

The challenges of the 21st century require leaders who can adapt to rapidly changing environments, understand situations and find innovative solutions to problems, and then lead their organisations forward. To this end we have designed our program around the core themes of entrepreneurship, leadership and consultancy. On this program, you will have the opportunity to work on real projects for a range of organisations, both large and small, and thereby explore your potential and harness your skills.

We aim to develop exceptional global leaders in a carefully selected learning community, diverse in background but sharing an international perspective and high aspirations. In a thoughtfully designed program that combines dialogue, personal attention, coaching and extensive leadership practice, our teaching and training resources and professional teams guide the class through a dynamic mix of business fundamentals, self-development and real-world experiences. A constant interplay between knowledge, action and reflection builds deep business and leadership skills, preparing graduates to successfully lead themselves, teams and whole organizations – now and into the future.

At PBS, we are also ambitious and curious leaders with courage.

As the dean, I invite you to join us and embark on an exhilarating and life-changing experience. I very much look forward to welcoming you to PBS and on to your PGDM journey, and keeping in touch with you when you join our alumni community.



DR. MANJU PUNIA CHOPRA

DEAN - ACADEMICS
PUNE BUSINESS SCHOOL (PBS)

CORPORATE RELATIONS NOTE

At the end of the day, people are our biggest assets. No organization can become great based just on technology and strategy. In my time as the Dean - Industry Institute at Pune Business School, I want to make sure that the organizations of the world are able to reach their goal with the help of the talent we develop at PBS.

My aim and vision is to provide great opportunities to the high potential students at PBS and guide them to set their career ahead.

Organizations these days, hire for attitude and my core focus will be to inculcate a great work ethic and attitude within the students of PBS. Skill can be learnt, attitude is what will get them to great heights in their career.

A major part of the student's life depends on the placements he or she might receive ahead in future. The responsibility of building seamless corporate relations and creating opportunities for our students at the nation's leading companies is a task which will always be very close to my heart.



DR. SHITALKUMAR RAWANDALE

DEAN - INDUSTRY INSTITUTE
INTERACTION & PLACEMENT
PCET

WELCOME TO PCET'S PUNE BUSINESS SCHOOL,

Pune Business School founded by PCET, which is a leading group of institutions in Maharashtra. Right from the construction, using the best of architects, to the design of curriculum with the help of leading management experts from industries, Pune Business School has followed the best of global standards for imparting quality Management education.

Pune Business School believes in providing the best of learner-centric infrastructure like wi-fi campus, corporate experienced teachers, experiential learning curriculum. Guest faculty, short term certificate courses by industry as add-on electives, foreign language courses by eminent faculty members, and Special lectures from industry experts are other highlights. Guest faculty members trained from the reputed B schools with the industry exposure are involved regularly to give the best inputs to the students of Pune Business School.

India's speedy economic growth needs management professionals who not only have all the management skills and technical knowledge, but are also capable of leading the corporate sector. Pune Business School is committed towards fulfilling this need, by training young managers in all round aspects. In addition to strict academics, the students are also exposed to live projects, industry visits & internships giving them experiential learning opportunities. Their projects are evaluated by executives to understand the rigor of corporate life.

In short, PCET's Pune Business School is seriously committed to shaping your career to the best of the requirements of the corporate world. I, Head of students relations welcome you to this modern corporate management learning campus called Pune Business School.



DR. KRISHNA AINENIWAR

HEAD - STUDENT RELATIONS
PUNE BUSINESS SCHOOL (PBS)

TPO MESSAGE

The Placement Cell acts as a mediator between prospective employers and students. This ensures that students are well informed about the companies and sectors in which they are interested. The Training & Placement Committee always approaches to the new companies and keeps them aware about the development for the welfare of students at our Institute. Guest lectures and industry interface sessions are hosted by the placement committee. It also ensures that students get a summer training program at an Excellent Companies on Project which provides good exposure and learning.

We take a unique approach at PBS to provide students with orientation to management studies. A distinctive initiative in which, in order to develop their knowledge, skills and attitudes, students undergo basic training and the development of communication, aptitudes and mastery through various classroom and activity-oriented lessons.

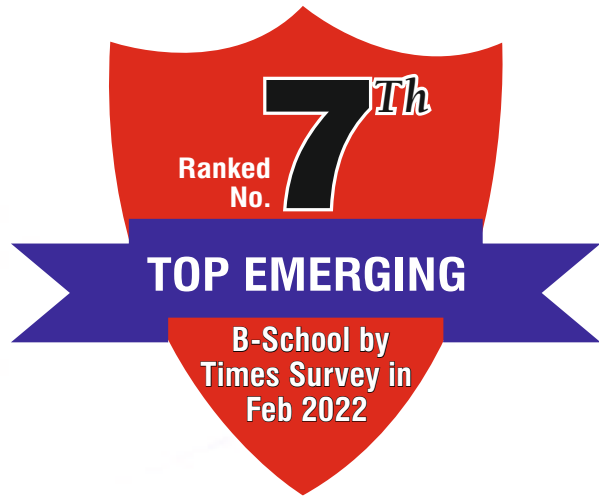
It is beneficial to students who have shifted to management studies from a different curriculum background as they require some time to grasp and take a hold of different subjects and the new regime. PBS facilitates student with the Induction Program followed by foundation course for 2 months to provide them some hands-on experience with the corporate world through the Corporate Master Classes delivered by Top Notch Industry Experts.

PBS has a vision to create Industry ready managers and the Entrepreneurs and to serve the purpose, we do have the fruitful associations with few of the industry backed and supported organizations viz. Confederation of Indian Industries (CII), Pune Management Associations (PMA), Rotaract Club, etc.,



MS. MINAKSHI TYAGI

DEAN - CORPORATE RELATIONS
PUNE BUSINESS SCHOOL (PBS)



'TOP EMERGING' B-School in India Times Survey 2022



ABOUT US

The Pune Business School is a comprehensive academic institution with a distinctive learning style and a global vision. It is an upcoming institute in academia, research and management in India and the Maharashtra region. In order to improve the student learning experience, a developed innovative and focused plan has been prepared to enhance and enrich the student services and facilities. As a part of this strategic focus, PBS aims to ensure that all new and existing engagements become a quality centered learning experience. PBS aims to meet student residential and social needs, provide effective student support services and promote the students' personal development and ultimately their employability.



VISION

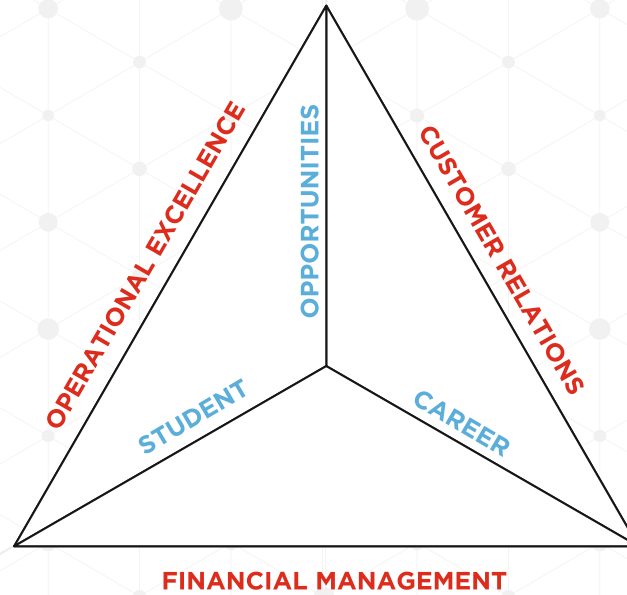
To create dynamic industry ready managers and entrepreneurs who are socially sensitive, ethical and harbingers of change equipped with a right blend of knowledge, skills and attitude.

MISSION

Pune Business School is a confluence of world-class educational experiences that nurture lifelong learners and socially conscious managers and entrepreneurs through an integration of collaborative knowledge and professional skills within a sustainable environment that fosters research and serves the needs of the global community.

Our culture is derived from a tetrahedron, also known as a triangular pyramid, is a polyhedron composed of four triangular faces, six straight edges, and four vertex corners.

We Adjoin
3 MAJOR FACTORS
of a Successful Business



3 MAJOR ELEMENTS
of our Institute

THE EVER-STRENGTHENING LEGACY



Pimpri Chinchwad Education Trust (P.C.E.T) was established in the year 1990 by renowned Philanthropist and social activist Late Shri S. B. Patil with a mission to serve the society, industry & stakeholders through value added quality education from Nursery to Doctoral studies. The trust is committed to its mission by Creating, Communicating, Preserving and Applying Knowledge, Art and Academic Values. PCET has expanded in a relatively short span of time to include 10 institutions offering 11 diverse academic programs at the school, diploma, bachelor, Masters and PhD level. PBS Being one of these 10 institutions enjoys the network, legacy, connections & perks of PCET.

Powerful Stats



LEGACY OF PCET

SALIENT FEATURES OF PCET & NMVPM

Efforts for Overall Development of Students.

- ▶ Active Cells & Committees for Growth, Welfare and Development of Students.
- ▶ Care and Concern for Academic Excellence, Soft Skills and Personality Development of Students.
- ▶ Highly Qualified, Experienced and Dedicated Faculties.
- ▶ Well disciplined Academic Culture and Conducive Environment for Learning.
- ▶ Proper and Stringent Academic Planning and Monitoring.
- ▶ Well known for conducting Pool campuses/ Off campuses
- ▶ Our Institutes are at walking distance from Akurdi railway Station.
- ▶ Top rankings of PECT institutes by various agencies.
- ▶ Quality Excellence through Conferences, Seminars and Workshops.
- ▶ Strategically located in Pimpri Chinchwad, Pune Asia's biggest industrial hub.
- ▶ Surrounded by Automobile, Manufacturing and IT hub
- ▶ Research Grants and Sponsored Projects.
- ▶ Encouragement for Higher Studies.
- ▶ Campus with Boys & Girls hostel facility.
- ▶ Motivation for Research & Innovation.
- ▶ CCTV Cameras and LCD Projectors in each Classroom, WiFi available.
- ▶ Add on Technical Courses like SAP /CAD/CAM/Design Thinking
- ▶ AC conference room & Seminar hall.
- ▶ Basket Ball, Volley ball court, Foot ball and Cricket ground in campus.
- ▶ Digital Library with books, E books, Journals, E journals & facilities like EBSCO & J- GATE.
- ▶ ATM in Campus.
- ▶ Skill Based B. VOC Courses
- ▶ Parent-Teacher Guardian Scheme.
- ▶ Canteen & mess facility within campus.
- ▶ Involvement of Students in Social activities of NSS & Students Welfare Cell.

LEGACY OF PCET

PCET & NMVPM AWARDS

- ▶ "Lokmat Icon of Education Award 2016" by the hands of Hon. Vinodji Tawade - Education Minister Maharashtra State by Lokmat Media.
- ▶ DataQuest Top T Schools 2019: PCCoE Ranked 7 in West Zone Top 10 T Schools, 20 among Private T Schools in INDIA, 34th in Top Government + Private T Schools in INDIA.
- ▶ NCER has been awarded with "Best Skill Based Engineering Institute in Maharashtra, 2019" at 7 Global Education Excellence Awards.
- ▶ Global Education Excellence Award 2018, honored PCCOE&R as "The Most Result Oriented Engineering College in Pune" at New Delhi.
- ▶ NMVPM Awarded "Best Industry Interface Institute in Maharashtra 2018" at 6th Global Education Excellence Awards 2018 & Summit, New Delhi.
- ▶ "Best Institute for Technical Education in Maharashtra" at India Education Excellence Award 2014 by World Achievers.

MAHARASHTRA'S LEADING PLACEMENT CELL WITH A RENOWNED LEGACY SOME OF THE MAJOR POOL CAMPUS / OFF CAMPUS DRIVES CONDUCTED BY CENTRAL PLACEMENT CELL

Sr.	Name Of Company	Students Registered	Offers
1	TCS (For all students across Maharashtra)	4500	640
2	Cognizant (For students Across Maharashtra)	2000	392
3	Capgemini (For students across India)	14000	250
4	IBM (For students Across India)	3500	230
5	L&T Infotech (For students Across Maharashtra)	2500	220
6	Accenture (For students Across Maharashtra)	2200	219
7	HP (For students Across India)	9000	194
8	Infosys (For students across India)	1500	90
9	Tech Mahindra (For students Across Pune)	800	71
10	Amdocs(For students across Maharashtra)	1500	70
11	KPIT (For students Across Pune)	1200	68
12	Atos (For students Across Maharashtra)	4191	67

LEGACY OF PCET

www.pcpolytechnic.com



Pimpri Chinchwad Polytechnic (PCP)

www.pccoepune.com



Pimpri Chinchwad College of Engineering (PCCOE)

www.pccoer.com



Pimpri Chinchwad College of Engineering and Research (PCCOE&R)

www.sbpatilmba.com



S. B. Patil Institute of Management (SBPIM)

www.sbpatilarchitecture.com



S B Patil College of Architecture & Design (SBPCOAD)

LEGACY OF PCET

www.sbpatilcollege.com



S B Patil College of Science & Commerce (SBPCSC)

www.sbpatilschool.com



S B Patil Public School (SBPPS)

www.punebusinessschool.com



Pune Business School (PBS)

Institutes Under Management Support By Pimpri Chinchwad Education Trust (PCET)

www.nmiet.edu.in



Nutan Maharashtra Institute of Engineering & Technology (NMIET)

www.ncerpune.in



Nutan College of Engineering & Research (NCER)

PCET PLACEMENTS & INTERNSHIPS

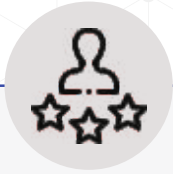
									
									
									
									
									
									
									

PCET PLACEMENTS & INTERNSHIPS

**WHY PBS WILL BE
THE RIGHT CHOICE
FOR YOUR
CAREER'S SUCCESS**





ACCESS TO EXPERTS / NETWORKS

Access to faculty and recognized experts from Academia and Industry who are regularly invited during training sessions, guest lectures, seminars and workshops to speak on the current trends in the corporate world. Strong backing from over 500 guest lecturers over the two year program, facilitating our students to establish strong networks with industry experts who can be reached out at all times.



A PERSONALIZED EXPERIENCE

A notably smaller batch size compared to various B-schools gives us an edge over others since we render individualized attention, shape students to pursue their careers according to global prerequisites and standards, enriching student teacher interactions and open window policy.



GLOBAL ORIENTATION THROUGH INTELLECTUAL CAPITAL

Our intellectual faculties focus on training, keeping in mind the international perspective of management in order to enable students to rise to the challenges of operating in a global world.



A STRONG ALUMNI NETWORK

Strong connects with Alumni, relentless and unending support from them in every step taken. The Existing management institute of the PCET trust's Alumni are on board for PBS.



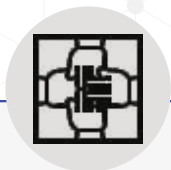
PERFORMANCE UPGRADATION SOCIALLY RELEVANT HOLISTIC PROGRAMME (PUSH)

A uniquely designed programme focusing on Leadership, communication skills, emotional intelligence and the latest managerial trends.



PERSONALITY ENRICHMENT PROGRAM (PEP)

An exclusive programme that focuses on decision making in the face of conflicting situations and intense pressure, logical reasoning, aptitude, general knowledge & research skills of students.



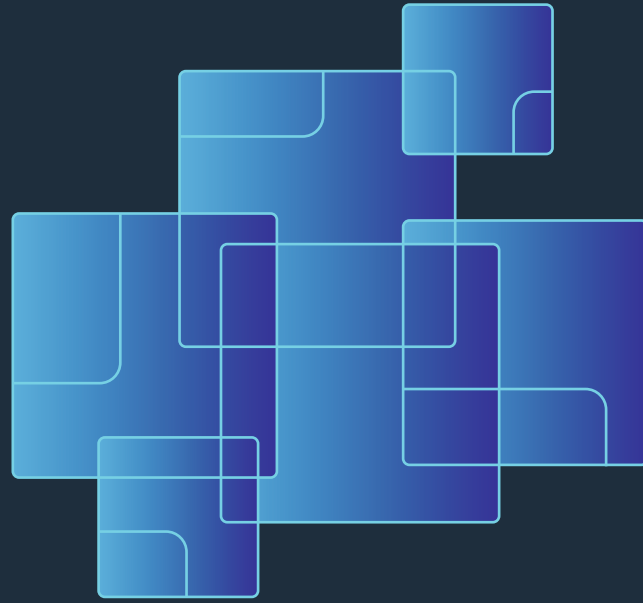
A CULTURE OF COLLABORATION

Deepening a sense of collaborative culture, encouraging teamwork and creating lifetime relationships among the students through Field Trips, Mentorship activities, Group Projects, Student Clubs & Committees, Outdoor Excursions, Cultural extravaganza ensure a collaborative culture encouraging teamwork which deepens relationships among students that last a lifetime.



ENTREPRENEURIAL INSPIRATION & INNOVATION

Connecting entrepreneurs, tips to explore a potential new venture and initiating the launch of students' ventures in our incubation cell.



**POWERFUL INFRA FOR
AN INFLUENTIAL TOMORROW.**

CLASSROOMS

The classrooms at Pune Business School (PBS) are designed to facilitate a blend of traditional and modern modes of teaching with technological aids such as ceiling –mounted LCD projectors, green boards, Wi-Fi and podium for faculty to create a true learning environment for the students.



HOSTEL FACILITY

PBS provides a separate hostel facility for boys & girls. The hostels are equipped with all latest amenities for a comfortable and homely stay. Students are required to pay extra for availing these facilities according to the hostel norms. Living in the PBS Hostel is an excellent way to start your journey at business school. The rooms are available on the first come first serve basis and exclusively for girls, the hostel provides comfortable, homely stay and twin sharing rooms with all basic amenities.



LIBRARY

The Library is the heart of any institute. The library is very spacious and well-furnished to create a pleasant environment for the students. It plays a vital role in enhancing the user's knowledge. The PBS Library is segmented into a Reference Section, Journal Section, Reading Hall and Digital library. The library has a collection of Textbooks, Reference, General and Rare-books, Journals, e-journals, CDs and LED TV etc. The library uses Vriddhi software. The circulation of books is based on a Bar-Code system.

The library has a collection of 5419 Books with 1746 Titles, 30 Journals and has e-journals and J-Gate. The Library has a collection of books on Accounting, Banking, Finance, International business, Marketing, and Sales, HRM, Training and General books. Reprography facility is also available. Associate memberships with MCCA, NIPM and Individual membership of NDL is also present. An Open Source repository of Shodhganga and NPTEL is also available.



CAFETERIA AND MESS

College Canteen , Mess and Cafeteria offers a wide range of hot and cold options for breakfast, lunch and dinner. The cafeteria features an array of freshly – prepared meals. Students enjoy all you care to eat.



SPORTS & RECREATIONAL FACILITIES

Health is wealth - to fulfill this desire of students, the institute has indoor and outdoor sports areas, where many activities are being organized for the students. The campus has fields and facilities for a number of sports that includes:

- ✓ Cricket
- ✓ Basketball
- ✓ Table Tennis
- ✓ Badminton
- ✓ Carrom
- ✓ Chess
- ✓ VolleyBall



IT INFRASTRUCTURE & RESOURCES

The institute has an air-conditioned lab with the total capacity of more than hundred students with latest software and hardware and connected to Network LAN. The students enjoy fast connectivity of the internet. At PBS the students have ready access to up to date technological computer lab with a enough number of computers available to the students for web browsing



AUDITORIUM

The campus is equipped with a 200-seater state-of-the-art splendid air-conditioned auditorium with all the latest equipment to host various academic activities, such as conferences, seminars etc. At PBS student learning is not restricted just to the classroom. It is more centralized in the institute's auditorium with all the latest equipment to host various co-curricular activities that forms the core part of student life. The Institute auditorium has a seating capacity of 200 students. The auditorium is fully air conditioned and well equipped with proper facilities.



Admission Process

Post Graduate Diploma In Management (PGDM) is the flagship program of Pune Business School. The two year full time course has an intake of 120 Students. The programme is accredited by AICTE in India.

PGDM is a postgraduate course which includes the intricacies of business management study.

ELIGIBILITY FOR PGDM

Admission to PGDM course shall be made only from the candidates qualified from any one of the six all India tests, ie: CAT/XAT/MAT/CMAT/ATMA/GMAT or the common entrance examinations (if any) conducted by the respective state governments.

The selection shall be based on overall rank computed taking into account further components with the following weights.

Score in the Common Admission test 50%.

Score in academic performance of X,XII standards, with clear consistency and UG performance with the weight of 15%.

GD/PI- 25%.

Extra-curricular, sports, social work, Academic diversity, Gender Diversity etc with 10%.

Admission Procedure

- Apply Online
- Application received by the institute
- Counseling call by the institute
- Document Verification
- Scheduling the two interview rounds
- First Round of interview:
 - A. Interview Round with Faculty Member (Video mode)
 - B. Q & A round
 - C. Essay Writing
- Second Round of interview with Director: (Video mode)
- If selected, you will receive a selection letter from the institute
- Pay admission confirmation fee through digital mode
- You will receive a fee receipt and admission letter

Specializations in PGDM

- PGDM in Marketing Management
- PGDM in Financial Management
- PGDM in Human Resources Management
- PGDM in Business Analytics Management
- PGDM in Agri Business Management
- PGDM in Information Technology
- PGDM in International Business
- PGDM in Operations and Supply Chain Management



Fee Structure

Fee Structure (For Batch 2022-24) PGDM - Payment Schedule		
Installment	Date	Amount (in Rs.)
At the Time of Registration	-	50,000/-
First Installment	1st June 2022	2,25,000/-
Second Installment	31st December 2022	1,50,000/-
Third Installment	1st June 2023	1,25,000/-
Total Fees for First Year - Rs. 2,75,000/-		
Total Fees for Second Year - Rs. 2,75,000/-		

Note : **FOR FOREIGN STUDY TOUR PROGRAM**, The cost of travel and course fees and other related expenses would be borne by the students who intend to go at actual cost then. Laptop will be provided to students at Rs. 30,000 which is over & above the fees mentioned above.

PCET's Pune Business School PGDM Programs		
Sr. N.	Course Name	Fees
1	Regular PGDM Program	5,50,000/-INR
2	Regular PGDM Program + Certification Courses	6,00,000/-INR
3	Regular PGDM Program + Certification Courses + Singapore/Dubai/Turkey Edu Tour	7,00,000/-INR

About The Program

Post Graduate Diploma in Management (PGDM) Course at PBS

Our PGDM Course is designed for those who seek a program that mixes theoretical knowledge with the realities of the workplace; a program where group work, lectures, seminars, real business challenges and master classes are a natural combination; and a program where the combined thoughts of first-class academics, experienced practitioners, fellow students and career development experts are each valued as part of the teaching and learning experience.

Post Graduate Diploma in Management (PGDM): curriculum is jointly designed by the stalwarts from industry and academia. The program offered is full time and in regular mode, enhancing students brand value in the job market.

PGDM Course is **AICTE Approved** and in the same class as that offered by the leading B-Schools

USP's of the program are:

- ✓ Multiple skills development in students ensuring horizontal and vertical career move
- ✓ Induction Program at the beginning of the program to ensure soft-landing into the rigorous of B-School education
- ✓ Bridge Courses during Pre-term to ensure that students from different streams are on the same footing
- ✓ Pedagogy - simulation games, application-oriented program, case study driven approach, incorporating Harvard Business School cases, real-life case studies

PBS Teaching & Learning Pedagogy

PBS: EXCELLENCE IN PEDAGOGY



What sets PBS apart from all other management schools in India is its analytical pedagogy. PBS under PCET has played a pioneering role in the introduction of innovative courses. Every year new courses are introduced and changes made in current courses to keep students in sync with the latest developments in the field of management. All doctorate faculty members are research oriented and mentor students to conduct their projects as a part of experiential learning processes. PBS curriculum is totally focused on outcome based education.

Apart from regular student's interaction with blended learning process through lectures, using audio visual equipments, Case study or role play, project based learning; PBS has a foreign tour program. This enriches the overall curriculum for PBS to a global level. PBS goes beyond Industry 4.0 to engage students with the real world whilst learning the unique pedagogy of learning by solving industry problems through Innovation. PBS PGDM students will understand the cutting edge techniques to resolve complex business challenges, learn dynamic thinking skills for the VUCA (Volatility, Uncertainty, Complexity and Ambiguity) world, learn scientific principles, creative thinking with Innovation as the Gold Mine and more.



PGDM Syllabus (AICTE Approved)

First Year PGDM

During the first year of the Post Graduate Diploma in Management program, the student is grounded in core management. The courses provide a solid foundation in the management discipline which will lead the student towards his areas of specialization.

Pre-Term

Orientation – Accounting, Principles of Management, Workshops & Events, Case Analysis Methodologies, Two-day outbound Leadership program.

SEMESTER 1

Core Subjects

- Managerial Microeconomics
- Quantitative Research Methods
- Marketing Management
- Financial Reporting and Control Analysis
- Business Law
- Organizational Behavior & Principles of Management
- Organizational Study (on field Experience)

Enrichment Courses

- Enterprise Analysis and desk Research
- Written Analysis and Business Communication
- Business Oriented Computer Applications

Employability Enhancement Courses

- Aptitude and Reasoning Development
- Case Study Analysis
- News and Current Event Analysis (Newshour@PBS)
- Presentation Skills



Core Subjects

- Managerial Macroeconomics
- Qualitative Research Methods
- Contemporary Frameworks in Management
- Human Resource Management
- Operations and Supply Chain Management
- Financial Management
- Summer Internship Project

Enrichment Courses:

- Industry Analysis and Desk Research
- Personality Development and Communication lab
- Advanced Excel

Employability Enhancement Courses:

- Aptitude and Reasoning Development (advanced)
- Case Study Analysis
- News and Current Event Analysis (Newshour@PBS)
- Presentation Skills, GD and PI skills development

In the 2nd semester, the students will choose their specialization.

Marketing Management:

- Marketing Research
- Consumer Behavior
- Digital Marketing - I
- Personal Selling Lab
- B2B Marketing

Financial Management

- Investment Analysis, wealth and Portfolio Management
- Equity Research
- Direct Taxation
- Banking Laws and Regulations
- Introduction to LI and GI, Insurance laws and Regulations
- 2 NISM/NCFM Certifications must be done by the students

Human Resource Management

- Competency Based HRM
- Lab in Recruitment and Selection
- Learning and Development
- Public Relations and Corporate Communication
- Labour Welfare

Operations and Supply Chain Management

- Planning and Control of Operations
- Inventory Management
- Services Operations Management - I
- Services Value chain Management
- Productivity Management

Business Analytics

- Basic Business Analytics using R
- Tableau
- Data Mining
- Marketing Analytics
- Retailing Analytics

Agri Business Management (ABM)

- Agri and Rural marketing
- Agriculture Operations Management
- Agri Business and Cooperatives Management

The required courses and electives in the different functional areas are as follows:

Field Application

The student gets the opportunity to implement theoretical frameworks during the Research project and summer internship in an organization for period of eight to twelve weeks.

Course Supplements

Course supplements shall include functional labs, current event analysis, concepts review, career counselling, GD skills development, interview skills and a plethora of activities.



Core Subjects

- Project Management
- Decision Science
- Strategic Management
- International Business Environment
- Campus to Corporate
- Aptitude and Reasoning Development (Practical and Practice)
- Case Study Analysis (Advanced and specialization specific)
- News and Current Event Analysis (Newshour@PBS)
- GD and PI simulation, video-resume building

Marketing Management:

- Services Marketing
- Sales and Distribution Management
- Digital Marketing - II
- Product and Brand Management
- Marketing of Luxury Products
- Marketing of High Technology Products

Financial Management

- Advanced Financial Management
- Financial Markets and Banking Operations
- Indirect Taxation
- Financial Modeling
- Basic Valuation
- Technical Analysis of Financial Markets
- 2 NISM/NCFM Advanced Certifications must be done by the students

Human Resource Management

- Employee Relations and Labor Legislation
- HR Operations
- Compensation and Reward Management
- Psychometric Testing and Assessment
- Talent Management
- OD and Change Management

Operations and Supply Chain Management

- Services Operations Management - II
- Industry 4.0
- Logistics Management
- Manufacturing Resource Planning
- Total Quality Management
- Six Sigma for Operations

Business Analytics

- Advanced Statistical Methods using R language
- Machine Learning and Cognitive Intelligence using Python
- Data Warehousing Project Life Cycle Management
- Social Media, Web and Text Analytics
- Predictive Modeling using SPSS Modeler

Agri Business Management

- Agri Supply Chain management
- Food Technology and Processing Management
- Food Retail Management
- Fertilizer Technology and Management
- Fruit Production and Post-Harvest Management



Core Subjects

- Project Management
- Decision Science
- Strategic Management
- International Business Environment
- Campus to Corporate
- Aptitude and Reasoning Development (Practical and Practice)
- Case Study Analysis (Advanced and specialization specific)
- News and Current Event Analysis (Newshour@PBS)
- GD and PI simulation, Video-resume Building

Marketing Management:

- Services Marketing
- Sales and Distribution Management
- Digital Marketing - II
- Product and Brand Management
- Marketing of Luxury products
- Marketing of High Technology Products

Financial Management

- Advanced Financial Management
- Financial Markets and Banking Operations
- Indirect Taxation
- Financial Modeling
- Basic Valuation
- Technical Analysis of Financial Markets
- 2 NISM/NCFM Advanced Certifications must be done by the students

Human Resource Management

- Employee Relations and Labor Legislation
- HR Operations
- Compensation and Reward Management
- Psychometric Testing and Assessment
- Talent Management
- OD and Change Management

Operations and Supply Chain Management

- Services Operations Management - II
- Industry 4.0
- Logistics Management
- Manufacturing Resource Planning
- Total Quality Management
- Six Sigma for Operations

Business Analytics

- Advanced Statistical Methods using R Language
- Machine Learning and Cognitive Intelligence using Python
- Data Warehousing Project Life Cycle Management
- Social Media, Web and Text Analytics
- Predictive Modeling using SPSS Modeler

Agri Business Management

- Management of Agriculture Input Marketing
- Seed Production Technology and Management
- Livestock Management
- Farm Power and Machinery Management
- Agri Banking



AGRI-BUSINESS MANAGEMENT @ PBS

A career in Agribusiness can open doors to a plenty of industries such as commodity procurement and marketing, import-export firms, public and private enterprises, retail marketing, agro- financial services, farming industry, food production companies, packaging and other allied sectors with the use of the advanced technology. Agriculture Business as an industry has opened up vast opportunities for professionally skilled and qualified Managers.

WHY PGDM IN AGRI-BUSINESS MANAGEMENT @ PUNE BUSINESS SCHOOL

- The PGDM in Agri-Business Management is a 2-year full time course uniquely designed programme which shapes a professional to work in the Food/ Agri- business sector.
- The core curriculum involves the study of marketing along with food and agricultural markets that are designed to build train and enhance the managerial capability.
- The programme is planned by keeping the latest industry trends and requirements in mind and to enhance student's knowledge, skills and perspective necessary for management, leadership and decision- making in agri-business and allied sectors.
- Industry visits, value added certifications, training programs and opportunity to learn from the best in academia & industry.
- The curriculum comprises of three elements: Core management program, Agriculture-related inputs, and elective specializations.

Career in Agri-Business Management

- Agro and Food Processing Industry
- Agro Co –Operatives , Finance companies & Banks
- Seeds /Fertilizers/Pesticides Industry
- Agro Equipment Manufactures & Distributors
- Supply Chain & Logistics Management
- Procurement, Processing & Marketing
- Milk & Milk Products/Poultry & Fisheries/Edible Oil Industry
- Agro Export Houses
- E Commerce Industry
- Retail Sector, etc.



PROGRAM HIGHLIGHTS

- Value Added Professional Certifications
- Provision for International Exposure Through Global Resources
- Live Projects/Assignments from Agro-Business Sector
- Seminars and Presentations by Industry Experts
- Special Lectures from Experts from Agro-Business
- Placement Assistance

PLACEMENTS

- PCET has placed more than 23,000 students from across India in last few years through off campus/Pool Campus Drives.
- Around 650 Recruitment Drives conducted every year
- We place around 1,500 to 2,000 students Every Year.

POTENTIAL RECRUITERS



KNOW OUR TEACHING RESOURCES



Ms. Rashi Sharma
Head Of Learning And Development
At Reliance Jio Infocomm Ltd Pune,
Maharashtra



CA Vishakha Vidwans
Chartered Accountant



Adv. Anjali Wagh
Bsc, LLB, LLM, MPM and
Diploma in Cyber Laws.



Trupti Jadhav
M.Sc. Computer Science, Corporate
trainer and Motivational speaker



Vishal Desai
PGDRM, B.COM



Uma Dabir
PGDM, specialization is
Marketing and Finance.



Mrs. Arathi Purohit
B.Com, training in IT and
Management



Mr. Amithab Patnaik
Ph D Organization Management,
M.B.A (HR & MARKETING),B.Tech
Agricultural
Engineering



Suhas Jategaonkar
Master in Marketing Management
from Sydenham Institute of
Management Studies and Research &
Entrepreneurship Education, Mumbai
University



Neeraj Athavle
Be Electrical,
MBA (NIT Trichy)



Adv. Rushikesh Kate
MBA, LLB. Ex-Educator,
Unacademy.



Mr. Sachin Apte
Area Business Head At Reliance
Jio Infocomm
Limited Mumbai, Maharashtra

KNOW OUR TEACHING RESOURCES



Mr. Sameer Ramesh Gupte
Senior Finance/Legal/Human
Resource/Administration



Mr. Anish Dhoble
Entrepreneur & Corporate Trainer



Ar.Prashant Deshmukh
Architectural, Engineering Consultants
& Project Management, Prashant
Deshmukh and Associates Principal
Architect



Mr. Amit Wadhwa
Senior Project Advisors | President &
Executive Director, Venkys Group of
Companies | (Uttara Sub group of
Companies)



Dr. Ramkishan Yelamanchili
Associate Professor of Marketing,
K.J. Somaiya Institute of
Management Studies and
Research, Mumbai. India



Wagner Lima
CEO, America Energy Group



Mr. Dilip Deshpande
Entrepreneur & Corporate Trainer



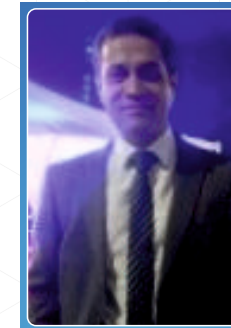
Rajesh Dubbewar
Vice president Operations
at Lumax Autotechnologies Ltd.



Sunil Kulkarni
President at Fidel Technologies
Japan



Manish Advani
General Manager Marketing &
Communications at Schindler India
Pvt. Ltd. | Brand & Story Consultant |
TEDx & Motivational Speaker | Global
Goodwill Ambassador



Vijay Gusain
Associate Vice President -
Current: Associate Vice President
Priority Banking at Kotak Mahindra
Bank



Sanjay Mishra
Vice President at Cotmac
Electronics Pvt Ltd - India

KNOW OUR TEACHING RESOURCES



Manoj Barve
India Head - BMW (German Federal Association of SMEs) at BVMW - Bundesverband mittelständische Wirtschaft e.V.



Prabhakar Salunke
Chairman - Sumeet Group



Mahendra Yadav
Founder & CMD at Accurate Powertech India Pvt Ltd



Pratapsingh Nathani
Chairman & Managing Director | Beacon Trusteeship



Sachin Itkar
Director - Palash Healthcare Ltd & Senior Programme Advisor - Strategic Foresight Group



Shivanand Mohan
Head Learning and Development at Larsen & Toubro PT&D Marshall Goldsmith Certified Executive Coach, Marshall Goldsmith



Dr. Mohan Uchgaonkar
Deputy Director, The Automotive Research Association of India



Edson Muniz do Rego
Founder, Tecnocuba, Latin America



Andre Rodrigue
CEO, ABENI GROUP, Santos, São Paulo, Brazil



Wagner de Moraes
Founder, WM Commodities São Paulo, Brazil



Sarang Vaidya
Co - Creator at Fresh Produce Value Creation Services Mumbai



Husain Hajite
Director-at Aspire Knowledge and Skills

KNOW OUR TEACHING RESOURCES



TD Arora
CEO, ERA INFRA



Parag Alekar
CEO-Nicolas Correa S.A.



Rajesh Mhaske
MD-Manas Automotive
Systems Ltd.



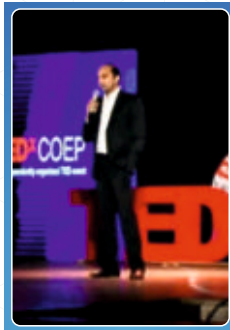
Chintan Desai
Chief Plan Examiner: NYC
Department of Buildings,



Prof. Arul Francis Raju
M.Phil, M.A, MBA



Parag Pagare
VP-Yes Bank



Neeraj Shah
Owner @ Silver Bright | TEDx COEP
Speaker | Mentor



Sanjay Gandhi
Chairman at Skills Age Foundation
Pune, Maharashtra, India



Mr. Stefan Haves
Cirque Director, Film Actor and
a TEDx speaker

Certification Courses

List of Certification Courses included in Fees

Compulsory Certifications

Data Analytics

Digital Marketing

Advanced Excel

Presentation Skills

Communication Skills

Proficiency in Business

Choice Based

Brand Planning and Consumer Insights

Marketing Management

Essentials of Business Law for Entrepreneurs and Start-ups

Logistics & Supply Chain Management

Fundamentals of Foreign Trade

Investment Planning for Individuals

Financial Modelling & Valuation

HR Practices

Machine Learning/Cloud Computing

Innovation & Entrepreneurship

Change Management

Foreign Language (German)

Foreign Language (Japanese)

Mode of Delivery

Self-paced online + Face to Face doubt clearing sessions

International Collaborations

Foreign University Linkages

The International academic collaborations are fostered with the aim of

- ✓ Offering International exposure, opportunities to PCET students
- ✓ Enhancing skills of Pimpri Chinchwad Education Trust (PCET) faculty by providing platform for joint research, collaborative teaching and learning with universities abroad.
- ✓ Academic collaborations with international universities are developed with the following objectives:
 - Establish Faculty & Student exchange programme.
 - Initiate summer school/internship for Undergraduate and Postgraduate Students.
 - Joint Workshops, Conferences, Symposiums, research

International Universities Exposure to PBS Students



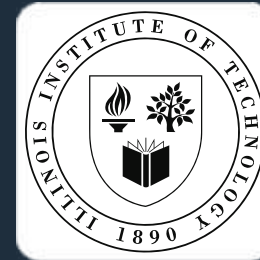
DR. JANHAVI INAMDAR,
Director, International Relations, PCET
Academic Coordinator, PCET

International Universities Exposure if added to the curriculum of PGDM course, it will complete the learning process in real sense. Pimpri Chinchwad Education trust has established International Relations Cell (IRC). IRC has signed agreements with 23 universities abroad in UK, USA, European countries and many more. Frequent lectures and workshops are organized for the benefit of the students of Pune Business School (PBS).

All Students of PBS will have opportunity to study at foreign universities for a short period of 1 month just to taste the culture/studies there. This program is called "Summer School at foreign universities".

Research activities can be undertaken by students and faculties of Pune Business School. I welcome you to be a part of the wonderful journey of your career shaping at Pune

PCET GROUP HAS SIGNED MOU WITH THE FOLLOWING INTERNATIONAL UNIVERSITIES IN THE AREAS OF ENGINEERING, ARCHITECTURE AND MANAGEMENT



International Collaborations

International Exposure through Global Resources



Mr. Renya Kikuchi

Chairman, SCCIP Japan Co., Ltd.



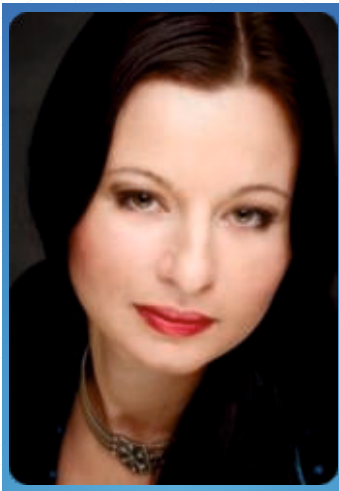
Dr. Tairo Nomura

Advisor, SCCIP Japan Co., Ltd.



Dr. Ray Montagno

Former professor of Management Ball State University



Prof. Ekaterina Demchenko

PhD, Associate Professor, BA International Economics and Business,



Dr. Ben Baliga

Lean Six Sigma Professional
Greater Minneapolis-St. Paul University



Dr. Makarand Jawadekar

Independent Pharma Professional
New London/Norwich, Connecticut

Pune Business School Offers A Cutting Edge International Exposure Foreign Study Tour Program

Pune Business School has tied up with Singapore Nanyang Institute for Foreign Study Tour Program . The cost of travel and course fees and other related expenses would be borne by the students who intend to go at actual cost then. At Pune Business School, we want students to gather an integrated and global approach. To lubricate this, PBS plans and executes educational tours for its students to understand an array of different cultural, community perspectives and enhance their interest on global issues. It is important that students today are prepared for the future world with a sense of community responsibility. In that direction, we at the Business Institutes are striving to prepare our students in a manner that they are not only 'life and career today ' but are also prepared with a sense of responsibility towards the community. In an effort to create a niche of innovation, entrepreneurship, and creativity in students, Pune Business School has collaborated and partnered with Nanyang Institute of Management, Singapore and Impatech –A Tech Innovation ,Singapore to provide international exposure to its students.



- ✓ PBS plans and executes educational tour to Singapore for its PGDM students
- ✓ To immerse in a suitable environment, in order to improve their knowledge in the shortest time possible
- ✓ To allow the students to experience a different culture and develop a better understanding of Singapore.
- ✓ To allow the students to get to know other students from various countries, interact and learn from one another.
- ✓ Ultimately, the students should be able to learn while in a relaxed and enjoyable manner.

Why Singapore?

Singapore is a country where the east meets the west. The mixture of these two cultures will allow students from all parts of the world to feel at home in the environment. Being a multi-racial society, Singapore will definitely allow students to have an extraordinary cultural experience and enable them to develop a deeper understanding of the different races and cultures. Singapore is no doubt, considered to be one of the safest countries with high security and political stability. The public transport system is very well established, making it convenient for students to travel around if they would like to do so. There are many expatriates and foreign students residing in Singapore and thus, students will not feel out of place in the new environment. However, some of the other programs with universities and colleges abroad will be on a payable basis separately depending on the available international linkages at an extra cost to other countries like Malaysia, Dubai, the U.K., Canada, and New Zealand.



Life @ PBS



Life @ PBS

THE INCEPTION : INAUGURATION



TEAM @ PCET



DR. SANJIVANI SHELKE
Dean HR and Admin, PCET



MR. YOGESH BHAVSAR
Incharge - Admin and Registrar, PCET

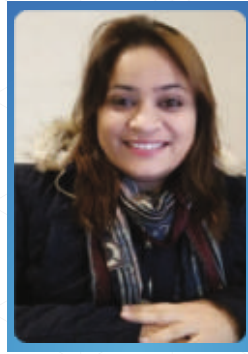


PROF. KETAN DESALE
Head Digital Marketing, PCET

TEAM @ PBS



PRAVENDRA VERMA
Manager - Delhi Office, PCET



RACHANA PAHUJA
Manager-Corporate Relations



PRANALI DESHMUKH
Admin Executive



PRAJAKTA SANDHIKAR
Academic Coordinator



ANURUDH NAIR
Officer - Corporate Relations



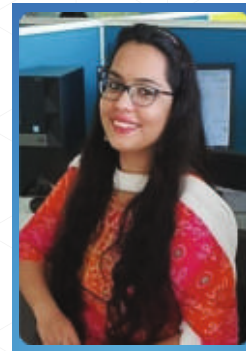
TEJASHREE JADHAV
Officer - Student Relations



SAUDAMINI PATIL
Officer - Student Relations



MOUMITA CHOUDHARY
Officer - Student Relations



MITALI BHIRUD
Officer - Student Relations



PRATIKSHA SAVARKAR
Officer - Corporate Relations



MS. MEGHANA SURVASE
Officer - Student Relations



ProSmart Club (Professional Development Club)

“ProSmart Club” is the Professional Development Club of PBS. This club provides a strong platform to the students to grow together professionally and bridge the gap between them and their dream profession. The club shall undertake activities to Enhance Professional development skills via workshops and seminars, writing Creative Briefs, come up with strong creative concepts, Presenting with Impact, learning to effectively manage up, down and across. The club also provides a platform to discuss issues related to student life and their specific field of interest by professionally connecting with industry and professors globally.



EconoSpeak (Economics Club)

“EconoSpeak” is the Economics club of PBS, Pune which aims at increasing knowledge, fostering understanding and stimulating interest of the students in the complex and interesting field of economics. The Club plays a vital role in creating awareness about the recent happenings in the economic world among the student community and creates the linkage with the theoretical concepts taught in the class and their implications in the corporate world. Economic Discussions and debates would help student’s stay abreast with economic happenings. The club shall conduct various events like The Economist, News Analyst, Budget Competition, Eco Quiz, case study competition with live cases from Business Houses. The club shall organize a Post-Budget Panel Discussion which aims to discuss to what extent the expectations have been met by the budget and how the students look at it from the perspective of the next generation of leaders.



WeClub (HR Club)

“WeClub” is the HR Club of PBS. Recognizing the role that human resources play in today’s dynamic organizations, the HR Club is founded with the sole objective to equip the students with the required industry exposure and the latest industry requirement in terms of skills and expertise in various fields of HR, learn the practicalities of the theories that they learn in the classroom. The club shall conduct an array of unique activities like Personality & Perception exercises, Book Reviews, Coffee with Corporate, Case - Study Competition, Plumbata etc. to sensitize the students to the latest changes in this field. Collaboration with Corporates, HRs and higher level executives and specialists for corporate interactions, experience sharing as well as discussions on various methodologies on HR and IR related issues shall enhance student knowhow and prepare them for their corporate journey.



Market Gurus/MG Club (Marketing Club)

“Market Gurus or MG Club” is the Marketing club of PBS. Marketing club intends to be the connection between students’ creative efforts and real life marketing crises, and organizes events that require them to think on their feet and be dynamic in nature. This Club shall conduct events like, Mad-O-Mania, Brandonize, Mandi, Marketing Quiz, Case - Study Competition, where contestants will get an opportunity to polish their marketing skills. This club shall delve into areas that include branding, advertising, marketing, product designing, digital marketing etc. providing the students with an opportunity to delve into the functioning of the corporate world, spanning from start-up ventures to multinationals.



Fit & Fine Club (FFC) Sports Club

“Fit & Fine Club” (FFC) the Sports Club at PBS shall conduct various intra-college and inter- college Sports competitions to keep the environment at the college fun-filled and enthusiastic. Competitions such as ‘War Game’ having various sports competitions, like cricket, Badminton, Table Tennis, Kho Kho, Chess, Carrom etc. shall be held to bring students together in a spirit of sportsmanship over matches held between juniors and seniors, students and teachers, current students and Alumni. This will also take care of Students Health and Fitness.

Student Initiatives and Student Clubs



EdPub (Editorial and Publication Club)

“EdPub” is the Publication and Editorial Club of PBS. This club gives a platform to the students to develop and refine their professional writing, editorial and publishing skills to ensure objectivity and quality. The club shall edit and publish high quality News Letters, Magazines, Edited Books and articles and get ready for the Industry.



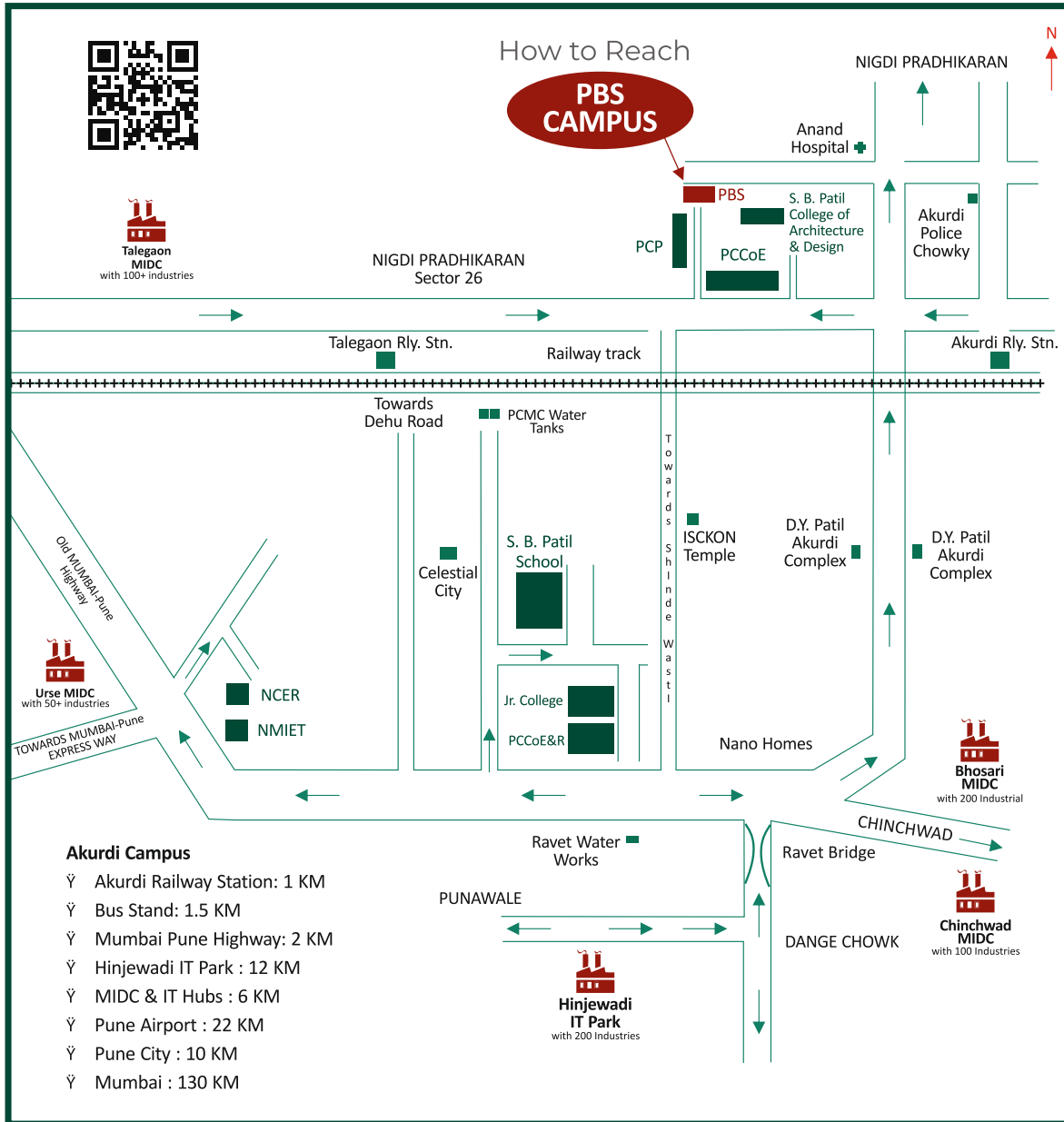
Artha-Tantra (Finance and investment Club)

“Artha Tantra” is the Finance and Investment Club of PBS, Pune. The club works to familiarize students with the concepts of managing and investing resources. Finance and Investment Club gives students an understanding of real world finances, and enables them to be better equipped to manage them. This club shall conduct activities like Themed Investment events, stock market events like Fincrotia, Bull-Race and Investia, and Case - Study Competitions etc. The club plans to include workshops and sit downs in its roster of events.



Venture Vultures (Entrepreneurship Club)

“Venture Vultures” the Entrepreneurship Club of PBS shall conduct a myriad of events which shall help inculcate the spirit of entrepreneurship among the students of PBS. The Club shall encourage students to have a sense of enterprise and a need to create change by having events that showcase students’ innovation and their ideas. Various Entrepreneurship-oriented events like "SPARKLE" - Innovative Idea Competition, Angel Investor, "GLIDER" - Wings to Fly Summit to get investors etc. shall be conducted which can test the planning, creativity and resource management skills of the prospective/budding entrepreneurs or students.



PCET's
PBS

Sector No. 26, Pradhikaran Nigdi, Pune - 411 044.

+91 91564 23225 / +91 84462 70407

+91 88550 88523 (ABM)

info@punebusinessschool.com

www.punebusinessschool.com



PIMPRI CHINCHWAD EDUCATION TRUST
A Trusted Brand in Education Since 1990..

