

LEXICON MANAGEMENT INSTITUTE OF LEADERSHIP & EXCELLENCE



OUTLOOK



Times B School



Business World

LEADERS CREATING LEADERS

ISO 9001:2015 CERTIFIED

**PGDM AICTE APPROVED (INSTITUTE ID: 1-4259511) | GLOBAL MBA USW, UK |
INTERNATIONAL MBA / MS UNH, USA**

Visit us on



Visit us on



SCAN & APPLY TO LEXICON MILE



Visit us on



Visit us on



CONTENTS

From the Chairman's Desk	1
From the President's Desk	2
From the Vice Chairman's Desk	3
From the Chief Executive Officer's Desk	4
From the Director's Desk	5
From the Desk of Director IQAC & Global Programs	6
From the Desk of Director of Admissions	7
From the Desk of Director Admissions - Global Programs	8
From the Desk of Director Placements and Corporate Connect	9
From the Desk of Head Branding & Digital Marketing	10
About the Lexicon Family	11
About Lexicon Management Institute of Leadership and Excellence	12
Vision, Mission and Core Values	13
Rankings	14
Awards	15
Key Highlights	16
Our Verticals	17
• Lexicon Centre of Research & Innovation	
• Lexicon Centre of MSME Excellence	
• Lexicon Centre of Excellence	
State of the Art Campus	20
Student Council and Committees	21
Advisory Council	22
Academic Council	24
National, International Faculty and Mentors	25
Corporate Exchange	27
Student Placements	31
Recruitment Partners in Excellence	32
360° Testimonials	34
Post Graduate Diploma in Management	48
Global MBA in Partnership with University of South Wales, United Kingdom	56
International MBA in Partnership with University of New Haven, United States of America	64
Life at Lexicon MILE	76
About Pune	81
Lexicon Cares	82





From the Chairman's Desk:

**MR. S. D.
SHARMA**

Chairman, The Lexicon Group

The Lexicon Group was conceived in 2006, with the mission of providing value based education with highest standards of excellence. Over the years we have not only been successful in making this dream come true, but also with the group completing 15 years since its inception, we have been able to exponentially grow and expand in our operations to different parts of Pune. With over 10+ Educational Institutes under the Lexicon umbrella which currently includes a Post Graduate College, an Under Graduate College, 3 High Schools and 6+ Pre Schools. Our family has been growing to a manifold size of 15,000 odd students today, coming from across Pune and India.

Lexicon Group's motto 'Believe in Yourself' has been the hallmark of the group's attempt to reach out to each student individually. The school curriculum is designed to make each child feel special and is inspired by the Eight Multiple Intelligences model by Howard Gardner. At the Post Graduate level, with Lexicon Management Institute of Leadership & Excellence aiming at 'Inspiration, Innovation and Discovery', we at Lexicon Group endeavor to ensure maximum return on investment for each student enrolled with us.

We have seen a phenomenal growth at Lexicon Management Institute of Leadership & Excellence over the years, having won prestigious awards at the National and International levels, backed with International tie-ups and more than a dozen additional certifications with the Post Graduation program. We have process driven systems ensuring the best fit industry placements.



From the President's Desk:

MR. PANKAJ SHARMA

President, The Lexicon Group
President, Pune Times Mirror

Lexicon Management Institute of Leadership & Excellence is an experience in itself; it is all about the arduous journey which every student coming here must embark. At Lexicon Management Institute of Leadership & Excellence, the academic curriculum is framed in a way which promotes the concept of 'Experiential Learning', that is learning by doing. Real life situations make the students understand and practically implement what is being taught.

Lexicon Management Institute of Leadership & Excellence is an entirely student driven Institute. This is the reason why each and every student is designated as a 'Student Leader'. Discipline coupled with high quality education at Lexicon Management Institute of Leadership & Excellence prepares the students for their corporate lives. The main focus of the Institute lies in creating and nurturing responsible business leaders who would hold the reins of the corporate in the near future. Lexicon Management Institute of Leadership & Excellence inculcates in the students a sense of belonging and ownership for the Institute, thus enabling the Student Leaders to offer their fruitful contribution to the dynamism of the corporate. With the focus on the holistic development of our students, we prepare them for the comprehensive business environment and equip them with the ability to take over all kinds of challenges that they may face.

A great pool of eminent dignitaries from the corporate world teach the Student Managers, making this process of overall student development a success. The Institute is all set upon skill building, strategy development and acquiring the much needed attitude.



From the Vice Chairman's Desk:

MR. NEERAJ SHARMA

Vice Chairman, The Lexicon Group
Director, Pune Times Mirror

The Lexicon Management Institute of Leadership & Excellence carries a legacy as old as 2006, when the first Lexicon International School was established in Wagholi. Lexicon Management Institute of Leadership & Excellence was formed in the year 2009 and we have successfully completed a decade of excellence in higher management education.

Lexicon Management Institute of Leadership & Excellence has achieved a great feat within a short span of time. Embarking on the path of successfully running a business school situated in Pune has not been a cake walk. We have been strong in our resolution to provide an ever evolving and expanding high quality education inculcating each domain of knowledge and catering only the best to the inquisitive and intellectual minds of India. The USP of Lexicon Management Institute of Leadership & Excellence lies in its contemporary pedagogies which in coalition with positive outlook, enviable global standards and great emphasis on moral values; makes us a league apart from our contemporaries. We take great pride in imparting traditional and social responsibilities, which are invoked in our scholars via frequent and timely celebration of all the festivals in accordance with the spirit of national secularism. We are highly conscious of the great challenges which lie ahead on this path of nation building which requires great dedication and humble service from the entire Lexicon Management Institute of Leadership & Excellence family. Still, there is a lot which is left to be done.

There is a gap in the need of industry for skilled, efficient, adaptable and honest human resources as only 70% of the students studying in these business schools are employable. To bridge this gap the most talented team at Lexicon Management Institute of Leadership & Excellence with the help of extremely enlightened people from the academia have created the syllabus and the processes which are in sync with today's industry needs. To explore, innovate and execute is a habit of Lexiconites. Last but not the least are these famous lines from Robert Frost, "But I have promises to keep & miles to go before I sleep."



From the CEO's Desk:

MR. NASIR SHAIKH

Chief Executive Officer,
The Lexicon Group of Institutes

The Lexicon Management Institute of Leadership & Excellence has been actively engaged in creating and nurturing leaders who "Believe in Themselves" and empowering them to turn Adversity to Advantage, and show true leadership skills in guiding their organizations to success.

With alumni of Lexicon Management Institute of Leadership & Excellence spreading their wings and showcasing their leadership across the globe it helps us to reflect and be proud of our value-based education as a foundation for Learning Never Stops' philosophy. Our endeavour has been to encourage and celebrate the dreamers who make their own mark, guiding them in their journeys.

Since its inception in 2009, we have believed that it is critical that our scholars take pride in learning and developing in an inclusive environment. This promotes awareness of self-discipline and an environment where we respect our cultural inheritance and each individuals' beliefs and value systems. Our longstanding relationships and partnerships, allow us to leverage Industry experts and Senior Leaders to share their knowledge and mentor our students in their journey to be... This also sets the students up for excellent opportunities for Internships and Placements.

Over the years we have given our students opportunities to hone their skills through execution of events that allow them to get a feel of the real working world and interact and engage with leaders to get their perspectives. From engaging them on conversations of "Excellence in Execution" to giving opportunities to develop their business and social networking skills, our faculty is happy to handhold everyone on their respective paths to success.

Our Faculty and Leadership is focused towards investing in our students for their 360° development in behavioural, skills, intelligence, adversity, social and emotional quotient with a philosophy that "Education is the most powerful tool which one can use to change the world."



DR. JITENDER KUMAR SHARMA

Director, Lexicon Management Institute
of Leadership & Excellence

Welcome to Lexicon Management Institute of Leadership & Excellence, where discipline is a way to learn & live! The environment is conducive to learning and conducting oneself in a disciplined way. The focus is to help our students excel, lead and be professionally and personally ready for their respective life journeys.

They say, 'It takes 20 years to become an overnight success,' and when this happens, we only see the night someone became successful in, not realising the troughs one may have faced to finally peak.

The word 'Discipline' evokes compliance, boredom and routine in our minds. It is also understood to mean falling in line and towing an order. Do you think Sachin Tendulkar just towed orders of his coach to achieve glory? Did Arjun- the Pandav, only follow orders of Dronacharya to master archery? Is discipline only about compliance of orders of the gurus? How did Manjhi single-handedly make a road through the mountain? Do you think Rakesh Jhunjhunwala or Warren Buffett have achieved financial success without being disciplined?

Through discipline you follow a rigorous routine, relentlessly. It helps you to lead a life bound by time and tasks. The word discipline induces perseverance to achieve against the odds. Have you ever thought of people hailing from industrially and economically backward areas making a mark in Civil Services examinations? They make a mark in good numbers. Most of these successful candidates in Civil Services are from rural areas, some of them deprived of basic necessities of life. Have you ever thought how they achieve such lofty life goals especially when they are deprived of finer aspects of living?

We all know the story of the Hare and the Tortoise. What differentiates them? Why do you think the Tortoise won the race? So, Tendulkar, Arjun and the Tortoise had many things in common like focussing on one thing at a time, relentlessly. Also, following their objectives without distractions and odds and taking small but continuous steps towards success. It may be time taking, frustrating & agonizing but leads to success, if pursued continuously. So, this '20 years to overnight success' is possible by discipline.



PROF. RAJU VARGHESE

Director, IQAC & Global Programs,
Lexicon Management Institute of
Leadership & Excellence

"In a time for drastic change it is the learners who inherit the future. The learned usually find themselves equipped to live in a world that no longer exists."

- Eric Hoffer

The world is for learners. It is dedicated to their inherent curiosity, passion, dedication and attitude. The words learned and learners are markedly different. The former is full of ego and the latter thirsts for more knowledge. The processes of learning, unlearning and relearning are ongoing. This defines the dimensions of knowledge. Our core identity as an institution is in our definition as a "Learning Institution."

It is with great pleasure that we invite you for a learning journey at Lexicon Management Institute of Leadership & Excellence for the various national and international programs. In this journey, we solicit your cooperation in submitting yourself to all the institute processes that have been defined by an intellectual Academic Council with the basic focus on making you solution centric to industry requirements. We intend to stimulate in you an acute learning thirst that will stand you in good stead throughout your lives. Nothing remains static at the institute, everything and everyone goes through an intense and dynamic change process. This helps us keep our academic offerings, our students, faculties, staff and all our partners relevant to changing business and world scenarios.

The world is going through an acute pandemic crisis. It has changed our perspectives and defined a 'New Normal'. The world on the other side of the pandemic will require many new skill sets and technology upgradations. This will also be a world full of opportunities for students. It will require new skills, quality certifications, adaptability and an enhanced quest for knowledge through a strong and positive attitude.

We at Lexicon Management Institute of Leadership & Excellence would like to partner with you on this journey that defines and builds your character. As the famous quote goes, "Watch your character, it determines your destiny." Welcome aboard for a destiny defining journey.



MR. VIKRAM SINGH

Director - Admissions and
Student Acquisition, Lexicon
Management Institute of Leadership
and Excellence

Welcome to an extraordinary learning journey at Lexicon Management Institute of Leadership & Excellence.

Confidence. Excellence. Kindness. The learner's journey imbibes these three virtues which is embedded in Lexicon Management Institute of Leadership & Excellence but prepares the student for his corporate life. Our students begin to develop as confident corporate team players, thanks to their multi-faceted academic and non-academic exposures. Apart from the traditional learning, they manage national events, TedX, conclaves, conferences, webinars, seminars, sports events, festivals and more. The students have also managed a Lexicon Cares program focusing on COVID counselling and medical aid call centers for assisting the infected in the Pandemic.

Our students excel due to vigorous academic support through learning resources, one on one mentoring, event exposures, managing projects community awareness projects and numerous social and cultural engagements. The start-up ecosystem is also promoted through Mindhub | Innovation & Incubation Lab.

We focus on character building education through kindness, care, and respect for others. The student environment is dynamic and nurtures a supporting learning environment. The education is multi-directional & effectual.

We welcome you for a wonderful tour of the state-of-the-art campus. You can be in touch with us to understand the academic, internship and final placement offerings. The students are from various parts of the country and with varying skills and academic qualifications making us a true representation of young professional Indians, all in one great learning institution.

A student's potential multiplies and magnifies, and they become contributors to the entrepreneurial and professional ecosystem of India.



MR. CHANDRAKANT SINGH

Director - Admissions and Student Acquisition - Global Programs
Lexicon Management Institute of Leadership and Excellence

We presume that a business school should provide us all with much more than just a diploma. It is all about evolution in education. Students want to learn skills that will help them in their future careers.

Employers want go-getters who will help them transform their businesses. Society desires businesses that will change the world. Everything starts with action, as it does with all changes.

The business school offers a life-changing experience that positions you to reimagine and then pursue your highest aspirations, both personal and professional. Selecting the right business school that will be your ally and partner during this journey is one of the most important and maybe the most difficult decisions you must make.

For someone who has been on both sides of the table, i.e., corporate as well as academia, and with all the exposure that I have had in these years working for the best brands, here are a few tips for students which would help them make the career-defining decision for them, which is to choose the correct B-School.

The better a campus is connected with the corporate world, the better it is for the students. The students get to understand the expectations of the corporate world from management graduates, and these key people from the corporate visiting the campus help the students with the paradigm shift from campus to corporate, and I take a lot of pride in saying that we are very strongly connected with the corporate. This enables our students' transition from campus to corporate very smoothly, and the way our curriculum is designed is testimony to that.

The Faculty of a B-School are a very important part of the learning process. They are the backbone of any institute, and we strongly believe in it. The infrastructure of a B-School is termed "great" if it has an essence of corporate to it. It should make the students feel polished and industry ready.

We talk about a B-School and the very next thing that comes to our mind is the ROI. They say it stands for return on investment, but it's a return on intent. One should always choose a B-School based on the intent that they show towards shaping one's life, and one can easily connect with our current students to know what our intent is. Here's wishing all the aspirants a successful journey ahead. May you all rise and shine. May the best happen to you and you get picked up by Lexicon MILE, Pune.



MR. ANUP SHETH

Director - Placements & Corporate Connect,
Lexicon Management Institute of
Leadership and Excellence

When you graduate from the Lexicon Management Institute of Leadership and Excellence, you will be ready and confident to face any professional challenge in any corporate setting-or become what we call a "Day Zero Professional." This is what we strive to deliver with success. In the course of your two years with Lexicon Management Institute of Leadership and Excellence, we will facilitate a myriad of industry experiences and associations for you. Through a constant stream of seminars, conclaves, workshops, panel discussions, and guest lectures, you will get a chance to interact up-close with many corporate leaders and industry veterans from different fields.

Your industry interface will be further strengthened with our 9-month internship in leading organizations, wherein you will not only learn exponentially but also potentially gain a job offer for the future. In your journey with us, you will enjoy the support of our esteemed alumni, who are spread across the globe today in leading companies such as HSBC, Citi Bank, Bajaj, TIAA, eClerx and more. Their success will tell you about the power of hard work and networking.

In the 17 years of my exposure to the corporate world, I always felt the gap between the ever-changing organizational needs and the academic curriculum that colleges offered to their students. Hence, at Lexicon MILE, our curriculum is designed and upgraded year on year based on the feedback received from our academic council, which is a mix of corporate leaders and academic scholars, to ensure that each Lexiconite undergoes all the learning that is most relevant to the ever-changing industry trends and needs. At Lexicon MILE, we work as hard as you to enhance your academics, communication skills, and attitude to a level befitting a professional career. This is why most of our students gain placement offers even before the completion of the program.

We look forward to welcoming you to the Lexicon family and promise to hold your hand as you set out on the path of success...



MS. SHAGUFTA ASHRAF

Head - Branding & Digital Marketing
Lexicon Management Institute of
Leadership and Excellence

At Lexicon Management Institute of Leadership & Excellence, we create an intellectual space for our students where they can question, explore, experiment, and inspire. I can proudly say that we provide a contemporary learning environment for our students.

We develop our students to be the best version of themselves and become the resilient, self-aware, ethical leaders that the world needs. We inspire students to improve not only their own lives but the business community and society as a whole.

The institute constantly pushes you outside your comfort zone, thus making you more adaptable and industry-ready. The confidence this brings is invaluable and sets you on a path of continuous growth—for life.

The curriculum is designed to integrate theory with the practice required in any industry. We support all our students to have a positive impact on the world. Lexicon MILE brings people together who are engaged, informed, and empowered to change the world. Continued, insightful, and systematic feedback from faculty and mentors will help you improve your personal and professional skills.

With my decade-long experience in educational branding, I strongly feel that this is the best decision, not just for your academic growth but also your all-round development. We will train you to be a brand in yourself and to develop an authentic leadership style that is uniquely yours. As rightly said by Jeff Bezos, "A reputation is for a person, as a brand is for a company."

ABOUT THE LEXICON FAMILY

THE LEXICON GROUP OF INSTITUTES



GROUP OF COMPANIES



By Lexicon Management Institute of Leadership & Excellence



By Lexicon Management Institute of Leadership & Excellence



REST THE CASE



Think | Create | Implement



By Lexicon Management Institute of Leadership & Excellence

ABOUT LEXICON MANAGEMENT INSTITUTE OF LEADERSHIP & EXCELLENCE

Lexicon Management Institute of Leadership & Excellence is a part of The Lexicon Group of Institutes, established in 2006 in Pune. The Lexicon Group of Institutes also includes Pre-schools, Schools, Lexicon Institute of Hotel Management, a Therapy Centre for specially abled children.

Lexicon Management Institute of Leadership & Excellence was established in 2009 and has state of the art teaching aids and Mindhub | Innovation & Incubation Centre to promote entrepreneurship and a start-up culture.

Lexicon Management Institute of Leadership & Excellence believes in the "One Student at a Time" approach to build exclusivity in students through fundamental academic processes, robust evaluation methods, innovative induction, strong internship systems and exposure to managing world class events. Lexicon Management Institute of Leadership & Excellence prepares the students to be industry ready through various academic and extra-curricular activities.



VISION, MISSION, CORE VALUES

Vision

To be a globally admired group of diverse educational institutions enabling students to become valued citizens of the world.

Mission

To develop an all round personality of our students by:

- Providing Student - centric learning.
- Encouraging critical thinking.
- Encouraging problem anticipating and problem solving thinking.
- Celebrating diversity.
- Working towards every aspect, no matter how small.
- Working consistently as a team.

Core Values

Excellence: We perform to be outstanding and strive for brilliance in all that we do.

Integrity: We rise above personal bias, endeavor to sustain trust and conduct ourselves with impeccable loyalty and fairness.

Ownership: We own up our words and actions with accountability.

Discipline: We honor responsibility and venerate the commitments to work and life, with dedication and devotion.

Passion: We work with an incomparable passion to make a positive change towards a holistic and wholesome life.

Humility: We believe whatever heights one reaches in life; modesty and unassuming nature are the true hallmarks of a management professional.

Gratitude: We remain indebted towards the goodness of humanity, society and the benevolence of life.

Respect: We revere the identity of each individual we interact with and value their dignity, existence and purpose of life.

Environment Sensitivity: We aim to protect and promote environmental sustainability.

Social Sensitivity: We stay compassionate to the lesser privileged in society.



RANKINGS

OUTLOOK- ICARE INDIA MBA RANKINGS 2022

- Ranked 1st in Private Standalone Institutions in Pune
- Ranked 4th in Top Private Institutions in Pune
- Ranked 15th in Top Private B Schools in West Zone
- Ranked 47th in Top Private Institutions in India

TIMES B SCHOOL NATIONAL RANKINGS 2021

- Ranked 7th Amongst Top 20 B Schools in the west.
- Ranked 8th Amongst Top 100 Private Institutes in India.
- Ranked 19th Amongst Top 150 B Schools in India

BW BUSINESS WORLD RANKINGS 2022

- Ranked 12th Amongst Private B-School in the West Region
- Ranked 47th Amongst Top Private B-Schools Pan India
- Ranked 66th Amongst Top B-Schools Pan India

<p>RANK 1 PRIVATE STANDALONE INSTITUTIONS IN PUNE</p> <p>RANK 4 TOP PRIVATE INSTITUTIONS IN PUNE</p> <p>RANK 15 TOP PRIVATE B SCHOOL IN WEST ZONE</p> <p>RANK 47 TOP PRIVATE INSTITUTIONS IN INDIA</p>	<p>RANK 7 AMONGST TOP 20 B SCHOOLS IN THE WEST</p> <p>RANK 8 AMONGST TOP 100 PRIVATE INSTITUTES IN INDIA</p> <p>RANK 19 AMONGST TOP 150 B SCHOOLS IN INDIA</p>	<p>RANK 12 AMONGST PRIVATE B-SCHOOL IN THE WEST REGION</p> <p>RANK 47 AMONGST TOP PRIVATE B-SCHOOLS PAN INDIA</p> <p>RANK 66 AMONGST TOP B-SCHOOLS PAN INDIA</p>
<p>LEXICON MANAGEMENT INSTITUTE OF LEADERSHIP & EXCELLENCE</p> <p>Ranked By Outlook</p> <p>ICARE India MBA Rankings 2022</p>	<p>LEXICON MANAGEMENT INSTITUTE OF LEADERSHIP & EXCELLENCE</p> <p>Ranked By Times B School</p> <p>Times B-School Survey 2022</p>	<p>LEXICON MANAGEMENT INSTITUTE OF LEADERSHIP & EXCELLENCE</p> <p>Ranked By BW BUSINESSWORLD</p> <p>BW Business World Rankings 2022</p>

AWARDS

FORBES AWARD

Leaders in Education

PRIDE OF MAHARASHTRA AWARD

Outstanding Contribution to Education

ASIA ONE AWARD

World's Greatest Brands and Leaders

BBC KNOWLEDGE EDUCATION LEADERSHIP AWARD

Best Academic and Industry Interface

ASIA EDUCATION AWARD

Best Innovative Management Institute in Pune

CENTRE FOR EDUCATION GROWTH & RESEARCH (CEGR)

Best Private Institute 2020

Awarded Best Management College in West India for Industry Interface 2021 by CEGR.

Best Academician Award 2021

DEWANG MEHTA NATIONAL EDUCATION AWARD

Best Emerging B-School

LEADLAB CENTRE OF EXCELLENCE AWARD

Vision and Contribution towards Nurturing Youth Leadership

INTEGRATED CHAMBERS OF COMMERCE AND INDUSTRY

Best Management Institute for Placement 2020



COLLABORATIONS



KEY HIGHLIGHTS

- Additional 10+ certifications like Supply Chain Management, German language, Golf Basics, Digital Marketing, MS Office, Neuro Linguistic Programming (NLP), Personal Branding, Fundamentals of Project Management, Conflict Resolution, Basics of Portfolio Management & Crypto Currency Trader Certificate provided to our students towards our efforts to make them Day Zero Professionals based on updated recommendations of the Academic Council across PGDM, Global & International Programs.
- Intensive, structured and phased Induction in Goa.
- LinkedIn Learning subscription for all Students & Faculty.
- Rigorous student involvement in strategic management decisions through the Student Council.
- 'One Student at a Time' approach for every student's growth and development.
- Student & Staff Reward & Recognition Programs.
- 15+ Vice Chancellors on Advisory Board.
- All students have a medical insurance cover of 2lacs & accident insurance cover of 1 lac.
- Industrial visits to understand business operations.
- International and National Research Conferences.
- Lexicon Heartbeats, an event to develop a culture of togetherness.
- Personal Branding & Personality Development Courses for a students.
- Finest academic delivery by Indian, International Faculty and Trainers.
- Mindhub | Incubation Centre aligned to the global trends of STEM MBA to train students to develop patents, copyrights and trademarks on their own.
- Academic Council comprising of members from IIMS, IITS and eminent Faculty from reputed corporate houses.
- Lexicon Cares Program to ensure best of health, hygiene & sanitation.
- Employability workshops and training in personality development, emotional intelligence, business communication...



OUR VERTICALS



Lexicon
Centre of Research
& Innovation

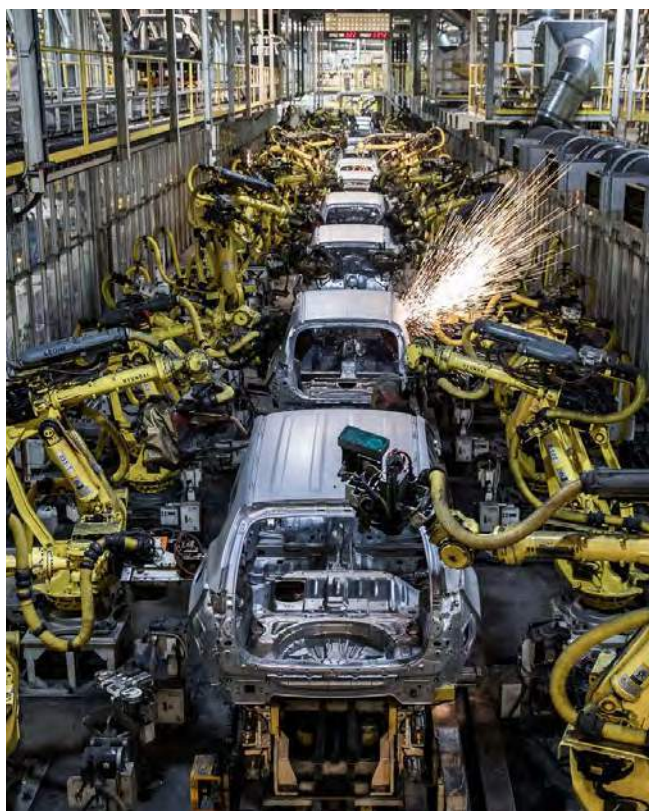
By Lexicon Management Institute of Leadership & Excellence

LEXICON CENTRE OF RESEARCH & INNOVATION

The Lexicon Centre of Research & Innovation revolves around adding value and benefit to the industry and the community by tracking, analysing and making the best use of data to deliver quality research studies and insight. The Lexicon Centre of Research & Innovation (LCRI) is serviced by a team with comprehensive understanding & command of the market research, insights and data science industry. It endeavours to provide comprehensive solutions from a single point of contact to all market research, data analytics & insights related issues across functions. The Lexicon Centre of Research & Innovation (LCRI) uses strategic robust research methodologies to provide pragmatic & actionable insights, solutions and recommendations.

To name a few the Lexicon Centre of Research & Innovation has conducted the following research initiatives:

- Rising Star Outreach of India (RSOi) Alumni to Ambassador.
- Mission Confidence: Maharashtra Mood on the Covid Vaccine.
- Leveraging Students Preferences : Insights Based Strategy for Educrack.



OUR VERTICALS



Lexicon
Centre of Excellence

By Lexicon Management Institute of Leadership & Excellence

LEXICON CENTRE OF EXCELLENCE

Lexicon Centre of Excellence operates in the areas of:

- Corporate Development Programs
- Consulting to Industry
- Short Term Courses
- Faculty Development Program
- Conferences

Few of our successful programs are:

- Nuances of Online teaching
- Mantra for Success: Believe in Yourself
- Marketing Concepts for Engineers for ARAI
- Training for Leadership team of Bharatiya Reserve Bank Note Mudran Private Limited
- TEDx Lexicon MILE
- The Lexicon Conclave on Diversity and Inclusion
- International Conference on Glocal Evaluation - Through and Post COVID -19 Times.

Lexicon Management Institute of Leadership & Excellence

Panel Discussion On
29th October 2021

We Would Like To Invite You To Be A Part of Prestigious Panel To Discuss On

Diversity – Key Ingredient to Successful Leadership Teams

10:00 am To 11:45 am Lexicon MILE Campus, Wagholi

Lexicon Centre of Excellence

Lexicon Management Institute of Leadership & Excellence

INTERNATIONAL CONFERENCE ON
GLOCAL EVALUATION
THROUGH & POST COVID-19 TIMES
ON 4TH & 5TH SEPTEMBER, 2021

University of South Wales, University of New Haven, TAYLOR'S UNIVERSITY, nlu, University of Pune

STATE OF THE ART CAMPUS

- One of the most preferred Institutes for world class management education.
- Studio finish air conditioned infrastructure and campus.
- Mindhub | Incubation Centre to promote research acumen in management students by eminent Faculty from IIMs/IITs and trainers.
- Digital Boards, cushioned and comfortable chairs and seating in all classrooms and halls.
- Pleasant and air conditioned library including digital library facilities with latest books and National and International Business Journals exceeding 7000+ volumes & 10,000+ e-books.
- High speed bandwidth enabled air conditioned Computer lab.
- Large, well-lit and multi-use playground.
- Digitally Enabled Campus
- State of the Art Studio on campus to deliver content virtually as well as record high resolution sessions for the knowledge repository.
- Large, ventilated and pleasant portico for numerous co-curricular student activities and programs.
- Wi-Fi and CCTV enabled campus with modern Hi-tech and air conditioned auditorium and seminar halls equipped with latest audio-visual aids.
- Professional and trained security and house-keeping services to maintain clinical hygiene.
- Student friendly common rooms, locker facilities to store valuables and important documents for boys and girls.
- Popular and well lit Café for fresh and healthy food with clinical hygiene.
- Lexicon Cares Program.



STUDENT COUNCIL & COMMITTEES

Lexicon Management Institute of Leadership & Excellence is a student driven Institute. The Student Council drives all the student related academic, non-academic activities and events of the Institute.

The premier and coveted positions in the council include the President, Vice President, and Secretary along with various Committee Heads and other members. The Investiture Ceremony inducts the Student Council Members into the council through an oath, which the students abide by, while being in office for the same, for that academic year.

Media and Marketing Committee

This committee is responsible for handling the development and implementation of communications plans across different media platforms. It manages all social media programs and activities for the students. The concept is to manage social communication for events, increase profitability, and integrate marketing with communication effectiveness.

Corporate Connect Committee

The Corporate Connect Committee is a student-led committee that connects industry and students. They organize keynote speeches for students by industry professionals and stalwarts to notify them of practical industry-wide trends. They also organize corporate events to engage students on industry trends.

Event Committee

This committee maintains and promotes togetherness, adaptability, and institute culture. Fostering healthy interaction among students is for the benefit of themselves and the nation. To provide students with engaging experiences during their time at the campus, the event committee considers and plans different engaging events.

Sports Committee

The sports committee's vision is to organize sports training, coaching, and education for everyone so that they can learn how to stay physically fit. The committee hopes to instill qualities like sportsmanship, team spirit, and bonding. It is intended to serve the student community's interests in competitive sports and other extracurricular opportunities, both indoors and outdoors.

Library Committee

The Library Committee evaluates and proposes policies for the Library, with a focus on collection and resource distribution among academic divisions and units. The Library Committee serves as a liaison between the Library and the faculty, staff, and students, as well as aiding in the assessment and promotion of the Library's alignment to learning goals.

Alumni Connect Committee

The Alumni Connect Committee helps to improve the bond between both the institute and its alumni in order to foster a mutually beneficial relationship. The Committee facilitates alumni interaction with administration and students by hosting a series of homecomings (reunions) on campus throughout the year. The committee also coordinates alumni interaction sessions for the current batch of students on a variety of topics on a regular basis. Aside from the unique experience of networking and interacting with top-tier officials and global assessment from the media.



ADVISORY COUNCIL



DR. MANIMALA PURI

Director, Academic
Administration, Symbiosis
Open Education Society



PROF. PRABHAT RANJAN

Vice Chancellor at DY Patil
International University,
Akurdi, Pune



DR. A.P. GARG

Vice Chancellor
at Shobhit University



DR. D.S. SENGAR

Professor & Head, Placements,
Indian Institute of Management
Lucknow, Noida Campus



DR. M.K. VAJPAYEE

Vice Chancellor,
Capital University
Jharkhand



DR. ANUP PRADHAN

Vice Chancellor
Sunrise University at Alwar



PROF. PIYUSH RANJAN

Registrar at Jharkhand
Rai University



MR. LOKESH MEHRA

Head, Amazon Web Services
Academy, South Asia



MR. SANJIV GOSWAMI

Mentor, Centre for Education
Growth and Research (CEGR)



PROF. N.K. THAPAK

Vice Chancellor LNCT
University Bhopal



PROF. ANIL BISEN

Provost (Vice Chancellor)
at ITM Vocational University,
Vadodara



PROF. ABHAY KUMAR

Vice Chancellor at
Pratap University
Jaipur

ADVISORY COUNCIL



DR. PANKAJ GUPTA

Professor & Dean,
O.P. Jindal Global
University



DR. RAKESH RANJAN

Vice Chancellor at
Himgiri ZEE University,
Dehradun



DR. RANA SINGH

Vice Chancellor,
Sanskriti University



PROF. (DR.) S.S. KUSHWAH

Vice Chancellor - Sarvepalli
Radhakrishnan University,
Bhopal



**PROF. (DR.) ROSHAN
LAL RAINA**

Vice Chancellor, JK Lakshmipat
University, Jaipur



PROF. (DR.) ANIL KUMAR

Vice Chancellor at Al Falah
University Faridabad



PROF. (DR.) N.K. SINHA

Vice Chancellor at
Himalayan Garhwal
University, Uttarakhand



**EMERITUS PROF.
(DR.) DEVENDRA PATHAK**

Vice Chancellor at Uttaranchal
University, Dehradun (Uttarakhand)



PROF. (DR.) K.P. ISAAC

Former Vice Chancellor,
Hindustan University



MR. MOHIT SONI

COO, Ministry of Skill
Development and
Entrepreneurship

ACADEMIC COUNCIL



MR. NEERAJ SHARMA

Vice Chairman,
The Lexicon Group &
Director, Pune Times
Mirror



MR. NASIR SHAIKH

Chief Executive Officer,
The Lexicon Group
of Institutes



**DR. JITENDER KUMAR
SHARMA**

Director, Lexicon
Management Institute of
Leadership & Excellence



PROF. RAJU VARGHESE

Director - IQAC & Global
Programs, Lexicon
Management Institute of
Leadership & Excellence



DR. SYED AHSAN JAMIL

Deputy Vice Chancellor
Dhofar University
Salalah, Oman



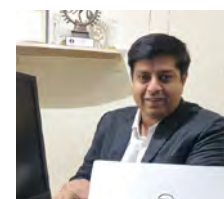
MR. CHARAN NAGARAJ

Apple, Bangalore



MR. ADITYA RAHUL

Allstate Insurance, Pune



MR. SURAJ NARAIN

Searchbourne, Pune



DR. VIDYA NAIK

NMIMS, Mumbai



MR. AJIT THATTE

IIT, Kharagpur, Alumnus



PROF. RAJEEV SHARMA

IIM, Ahmedabad



MR. PRAVEEN RATTAN

IIM, Calcutta Alumnus



MR. GIRISH IYER

General Manager,
CITCO - India



MR. ANUPAM TYAGI

Regional Operations Head
North at American Tower
Corporation



DR. INDRANIL BOSE

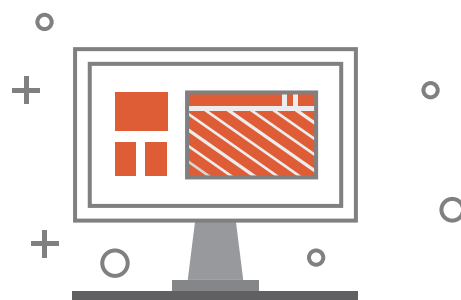
Dean, School of Business,
University of Bolton
RAK, UAE

NATIONAL, INTERNATIONAL FACULTY AND MENTORS



Name	Area of Specialization	Total Experience
Mr. Neeraj Sharma	Leadership, Strategy & Entrepreneurship	24 Years
Ms. Monisha Sharma	Marketing Management & Teaching Pedagogies	26 Years
Mr. Nasir Shaikh	Leadership, Strategy, Conflict Resolution & Innovation	21 Years
Dr. Jitender Kumar Sharma	Marketing & Customer Relationship Management	32 Years
Mr. Raju Varghese	Marketing & Entrepreneurship	26 Years
Dr. Swati Yeole	Human Resource Management	13 Years
Dr. Vineeta Agarwal	Financial Management	16 Years
Dr. Lambodar Saha	Human Resource Management	34 Years
Ms. Farheen Belgaumwala	Research Methodology & Human Resource Management	11 Years
Mr. Avinash Anand	Goal Setting	21 Years
Prof. Prashant Ubarhande	Taxation, Quantitative Techniques	21 Years
Prof. Madhup Gandhi	Production & Operations	33 Years
Prof. Vivek Divekar	Financial Management	44 Years
Prof. Ajit Thatte	Marketing Management	51 Years
Dr. Gareth White	Operations Management	11 Years
Prof. Kevin Brown	Human Resource Management	11 Years
Prof. Jonathan Deacon	Marketing Management	31 Years
Prof. Brian Telford	Accounting & Finance	21 Years
Prof. Victoria Stephens	Supply Chain Management	6 Years
Prof. Martyn Rowling	Marketing Management	10 Years
Prof. Avinash Kulkarni	Human Resource Management	32 Years
Prof. Quresh Moochhala	Marketing Research	28 Years
Prof. Vijay Haldavnekar	International Finance	39 Years
Mr. Stefano Pelle	Product & Brand Management	20 Years
Mr. Gurmeet Singh	Training and Development	30 Years

NATIONAL, INTERNATIONAL FACULTY AND MENTORS



Name	Area of Specialization	Total Experience
Dr. Pranab S. Deb	Fundamentals of Business Analytics, Advanced Business Analytics	22 Years
Dr. Vivek Marathe	Introduction to Data Structures & Data Visualisation	26 Years
Ms. Kirti Velpure	Project Management & Human Resource Management	18 Years
Mr. Varun Sachdeva	Digital Marketing & Social Media Analytics	8 Years
Mr. Kunal Kumar	Python	18 Years
Mr. Dilip Thosar	Marketing Analytics	35 Years
Mr. Ajay Bhatnagar	Operations Management	29 Years
Mr. Atul Soman	Economics	26 Years
Ms. Tarana Agarwal	Rural Marketing	4 Years
Prof. Kashmira Lonkar	Employee Relations & Labour Laws	7 Years
Prof. Abhishek Sood	Law	9 Years
Mr. Chirag Kothari	MS -Office	9 Years
Prof. Priyanka Srivastava	Mangerial Communication	16 Years

CORPORATE EXCHANGE



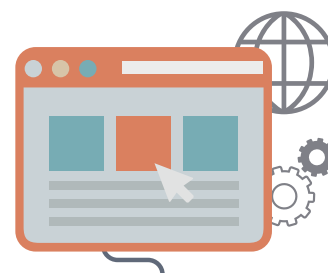
Name	Organisation
Mr. Mathew Jhonny	Accenture
Ms. Sandhya Jayakumar	Accenture
Capt. Partha Samai	AGS Technologies India Pvt. Ltd.
Mr. Nitin Shetty	Allstate Solutions
Ms. Virgina Alex Sebastian	Allstate Solutions
Mr. Aditya Rahul	Allstate Solutions
Mr. Abhijeet Thokal	Allstate Solutions
Ms Aparna Piramal Rajee	Author
Mr. Chandrahas Shetty	AXA Business Services Pvt. Ltd.
Ms. Karishma Sampat	Bajaj Electricals
Dr. Subhasish Mitra	Bajaj Finserv Ltd.
Mr. Abhinay Yadav	Bharti AXA General Insurance
Mr. Anand Sakaar	BMC Software
Mr. Gautam Pherwani	Bombay Consulting and Prof. Emeritus
Mr. Saurabh Shah	Capita
Mr. Sudeep Mukherjee	CEAT Tyres
Mr. Ghansyam Singh	Chai Point
Ms. Surekha Kotte	Credit Suisse
Mr. Raturaj Belhekar	Cushman & Wakefield
Mr. Girish Shenoy	Deloitte
Mr. Ranjeev Lahkar	DIAGEO India Pvt. Ltd.
Mr. Arun Thapar	eClerx
Mr. Adhiraj Karande	Emirates NBD
Mr. Tanmay Chandresa	eSolve Knowledge Services Pvt Ltd.
Mr. Anurag Rathi	FabHotels
Mr. Varun Sachdeva	Fabronics Corporation

CORPORATE EXCHANGE



Name	Organisation
Mr. Atulya Chandra	Hager Electro Pvt. Ltd., India
Mr. Amit Kadam	ICICI StockMIND
Ms. Richa Gandhi	Impulse Consultancy
Mr. Chirag Buch	Infosys
Mr. Deepak Gupta	Karvy Corporate
Mr. Nohar Nath	Kiabza
Mr. Vishesh Sahlot	Knight Frank India
Ms. Shilpa Marwah	Kotak Mahindra Bank
Mr. Nalin Mehta	Mahindra & Mahindra
Mr. Jeevan Jayakumar	Mercedes-Benz Research and Development , India
Mr. Satyajit Gujar	Ministry of Forests
Dr. Arvind Jha	Ministry of Forests
Mr. Rangnath Naikade	Ministry of Forests
Dr. Dinesh Kumar Tyagi	Ministry of Forests
Mr. Shahzeb Khan	Morgan Stanley
Mr. Rishabha Nayyar	MullenLowe Lintas Group
Ms. Neha Sharma	Neha Talks
Mr. Sourav Ahirkar	Olam International
Mr. Pradeep Joshi	Oriental Rubber Industries Ltd.
Mr. Babar Mian	Pamac Finserve Pvt. Ltd.
Mr. Gourav Dua	Reliance Jio Infocomm Limited
Mr. Varun Gupta	RP-Sanjiv Goenka Group

CORPORATE EXCHANGE



Name	Organisation
Mr. Suraj Narain	Searchbourne Consulting Private Limited
Mr. Varun Hatmode	SG Analytics
Mr. Sanjay Kingar	Shoppers Stop
Mr. Lovesh Gour	Sintex-BAPL Ltd.
Mr. Prasahant Shrawak	Sintex-BAPL Ltd.
Mr. Gagandeep Singh	Sintex-BAPL Ltd.
Mr. Prashant Kulkarni	Sony Pictures Networks India Pvt. Ltd.
Mr. Prathamesh Veling	Sutherland Global Services
Mr. Ravi Ramanathan	Strategic Inflection Solutions LLP
Mr. Avinash Krishnamurthi	Tata Consultancy Services
Mr. Manav Prasad	Tavisca Solutions Pvt. Ltd.
Mr. Vishal Bhargava	Teachers Insurance and Annuity Association of America
Mr. Anmol Dubey	Teachers Insurance and Annuity Association of America
Mr. Prashanth Kurias	Teachers Insurance and Annuity Association of America
Mrs. Juhi Chandra	Teachers Insurance and Annuity Association of America
Mr. Nikhil Kotian	Teachers Insurance and Annuity Association of America
Mr. Sanjay Gupta	Teachers Insurance and Annuity Association of America
Ms. Maneesha Dhaware	Tech Mahindra
Mr. Girish Iyer	The CITCO Group of Companies
Mr. Shakeel Siraj	The CITCO Group of Companies
Ms. Preeti	The CITCO Group of Companies

CORPORATE EXCHANGE

Name	Organisation
Ms Gargi Sharma	The CITCO Group of Companies
Mr. Mahesh Inamdar	The CITCO Group of Companies
Mr. Sameer Soni	The Times of India
Mr. Sameer Wagh	The Times of India
Mr. Vinay Trivedi	ToneTag
Mr. Mohammed Sufiyan Sait	Treebo Hotels
Dr. Sipko Mous	Vanderlande
Mr. Mahesh Menon	Vodafone
Mr. Kunal Sarpal	White Collar Legal LLP
Mr. Rajendra Raut	WNS Global Services
Mr. Rupesh Panambur	Yazaki India Pvt. Ltd.
Ms. Sherin Mathews	3SC Solutions
Mr. Anirudh Shrotriya	Shro Systems Pvt. Ltd
Mr. Ashutosh Pandey	Mahindra First Choice Wheels Ltd.
Mr. Ashwani Chaloo	Kshitij Management Consultants
Mr. Gagan Bhalla	NISSAN Africa India Middle East
Mr. Karthik Ramamurthy	Ipsos Strategy 3
Mr. Rahul Guha	Boston Consulting Group (BCG)
Mr. Samit Verma	Amplifon
Mr. Sanjiv Chaudhary	MRICS- Iridium Earth Tech LLP
Mr. Shashank Bhushan	BMC Software
Mr. Sunil Sharma	Midal Cables Group
Mr. Sushanta Mohapatra	ParadigmX Advisors
Mr. Vishal Pandey	Glasgow Consulting Group

STUDENT PLACEMENTS

PLACEMENTS

INCREASE IN BASE



100%

Our **placement** rate has been recorded as **100%** since the last three consecutive years despite Covid-19 & a **95 %** increase in student enrolment.

INCREASE IN BASE



Almost doubling in the number of students, we ensured partnerships with **300+** companies like Tata, Amazon, HSBC, P&G, Paytm, Sony, Nestle, BNY Mellon & many more.

100+ Corporate Connect Sessions & Masterclasses



Number of Companies placed with

2020

32

2021

67



Sectors Placed with

2020

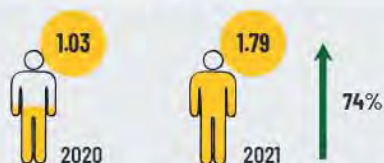
16

2021

30

PACKAGES

SURGE IN OFFERS



Average number of offers per student



Class of 2021 has seen a **74%** surge in **offers** received per student

JUMP IN SALARY PACKAGES



Average Salary in INR Lacs / Annum

INCREASED PLACEMENT EFFECTIVENESS

	2020	2021
Average number of companies handled per day	0.34	0.34
Average number of students placed per day	0.87	1.41

89 students from Class of 2022 already have PPO before completion of Year 1 of their studies with an average package of **INR 7.2 LPA**

RECRUITMENT PARTNERS IN EXCELLENCE



RECRUITMENT PARTNERS IN EXCELLENCE



360° TESTIMONIALS

Student Testimonials

SCAN THE QR CODE TO SEE VIDEO TESTIMONIALS



Mr. Navnit Kumar
PGDM Batch 2021-23
★★★★★

Placements at our college are 100%. They provide a lot of exposure to students. Many companies visit Lexicon MILE like - TIAA, Times Group, HSBC, Bajaj Allianz, Godrej Properties, CBRE, ICICI Bank, FOYR, Naukri.com, ZS associates, Fab Hotels, etc. They conduct Personality Development, Business Communication classes to improve the personality of their students.

I applied for the PGDM program in Lexicon MILE, and I am fully satisfied with my decision. At first, I filled the application form for this college, after that I received GD/PI call and my interview was scheduled by the college management. After my interview round, I received the mail from the college notifying me of my interview results.



Ms. Kritika Garg
PGDM Batch 2021-23
★★★★★

From semester 3 internship starts and, on that basis, the student gets to decide which field is best for their career. We learn new things which will shape our career in future.

Admission process was quite smooth and mentors assigned to us for counselling are very understanding and nice. The reason for applying in this college was internship opportunities given to students before real placements.

360° TESTIMONIALS

Student Testimonials



Mr. Sidhant Raj
PGDM Batch 2021-23



The campus is equipped with all the comforts and luxuries. All the departments, classrooms, labs, library is fully air-conditioned and equipped with the latest technology. Each classroom has smart boards, the library has all kinds of books to quench the thirst for knowledge.

The college provides guest faculty and in-house faculty who are just a call away when it comes to addressing the problems of students. They come with a rich industry experience and expertise. The curriculum is designed in such a manner that it prepares the students to face the challenges of corporate life. The students gain both theoretical and industry knowledge before they start in the industry. Lexicon MILE also supports the entrepreneurial views and start-up ideas of students.

The course here costs approximately 8.30 lakhs for 2 years' curriculum. And I do feel that the money is worth it because it provides a 9-month paid internship for all the students studying here. Considering the time factor, no other institute provided for a nine-month training program and theoretical knowledge simultaneously. Other factors include one-on-one student interaction, mentor-mentee programs, and a lively crowd followed by cultural activities. Faculty members provide proper guidance and support.

The college has been achieving 100% placement with top-notch organizations such as Amazon and TIAA. SG Analytics, Eclerx Treebo, Allied Treebo, Analytics, AGS, etc. with average package of around 6-8.5 LPA.

The highlight of Lexicon MILE is the 10-day induction comprising of outbound sessions and many other different activities that prepare you mentally and physically to enter the corporate world. Moreover, it is a student-driven college that gives students practical management knowledge that will help them in the future.

The college also organizes events that provide students with real-life experiences, exposure, and chance to meet various corporate houses. Change is the only constant phenomenon, as the adage goes, and this is especially true when it comes to educational institutions. With so many changes happening all the time, Lexicon MILE makes it easier for students to adapt by organizing many events, such as the Gala Night, TEDx, International Conferences & various business conclaves.



Mr. Prince Singh
PGDM Batch 2021-23



All students get placed in PGDM courses, and the average package they offer is around 7 to 8 lacs. Wipro, Infosys, HCL Reliance, and other companies visit our campus and offer good and decent internships.

The infrastructure of the college is great, like a 5 star hotel, and the college also provides sports facilities like cricket, football, basketball, badminton, etc. And all the faculty members are very supportive and are always ready to help you at any time.

Teachers are helpful, well-qualified, and knowledgeable. Whatever they teach, they try their best to make you understand, and you can feel free to share your problems with them at any time, and they will try to solve your problem.

Another reason you should choose this college for is, that they offer a paid internship. Internship is a great way to get a good understanding of the corporate world before you start doing the job. Lexicon MILE also offer 10 certification courses that will help you improve your resume.

360° TESTIMONIALS

Student Testimonials



Ms. Khwaish Taneja
PGDM Batch 2021-23



The admission process at Lexicon MILE is very well managed. The entrance exam is evaluated and then the interview process takes place. Scholarships are also available. The faculty is very humble and provides insights into each and every detail regarding the admission process which makes the procedure hassle-free. Undoubtedly, deciding to be a part of Lexicon MILE is one of the best decisions I've made to date.

I have enrolled in a PGDM course with dual specialization in Human Resources and Marketing. The faculty is top-notch. One-on-one mentors are provided to every student here, which helps in the overall personality development of every student. The course curriculum is designed in such a way that the students become Day-Zero Professionals.

Lexicon MILE provides dual specialization with its Post Graduate Diploma in Management course. The college provides a 9-month paid internship opportunity to every student with helps in overall growth in the personality of the individual as well as gives him an actual glimpse of what is happening in the corporate worlds. Big companies like TIAA, HSBC, eClerx, Bajaj Allianz, etc. hire students for the internship, and with their potential and caliber, it can also turn into a full-time working opportunity.

The campus is lively with amazing infrastructure. It is fully packed with luxurious e-classrooms, labs, library, innovation lab, playground, auditoriums, seminar hall, everything equipped with the latest technology. The entire place is fully air-conditioned. The cafeteria runs the entire day and delicious, fresh and hygienic meals are served. Lexicon MILE also organizes various multi-cultural events like festival celebrations and events, TEDxLexiconMILE, International Conferences which provides the students with real-life experience, exposure and in-person meetings with various renowned corporate leaders. The college also organises an Induction program for every batch, and for our batch, it happened in Goa this year, which is one of the most incredible experiences of my life as I got the opportunity to transform myself into a better personality by interacting with great industry experts.



Ms. Sukanya Thite
PGDM Batch 2021-23



The infrastructure and facilities provided by the college are really good. It includes smart classrooms, library, auditoriums, labs, etc. The infrastructure of the college is nothing less than a 5-star hotel, everything here is very well maintained. Also, medical facilities are provided as well.

College has recorded almost 100% placement every year and also during the COVID times. The faculties for placement are very helpful and been teaching us and guiding us in every possible way. The college ties up with companies like TIAA, Amazon, Wipro, TATA, Infosys, Reliance etc.

Life at Lexicon MILE helps one grow individually in every way possible. One can improve a lot on each and every field, facilities are very helpful and gives assistance in every stop.

Be it on academic grounds or the co-curricular activities, students have always enjoyed being a part of the college and have always discovered a new and positive side of oneself.

360° TESTIMONIALS

Student Testimonials



Mr. Mihir Kamboj
PGDM Batch 2020-22
★★★★★

Companies which visit our college for placements are good. Every student got placed with a good designation. Every student from our course got internships which were paid, and we learned a lot from that. Top roles depend on the specialisation which students choose. Roles offered are mostly satisfying for students.

The library contains every material which students should have in a management institute. The food served in the canteen is above average. However, the new Chinese cuisine added by our college is outstanding with reasonable prices.

Faculty members here are highly supportive with very good knowledge of their subjects. Every mentor is helpful and knowledgeable. The entire course curriculum is relevant. Teachers are performing excellently in these online lectures. They conduct online competitions and interactive sessions with students.



Ms. Arzoo Syed
PGDM Batch 2020-22
★★★★★

The college has excellent facilities like classrooms, labs, libraries and auditoriums. The quality of the hostel and the food available to us is really good. Medical facilities are available. Sports tournaments are also conducted on a regular basis. You will enjoy a lot here.

Every student gets placed here. Good companies like TIAA, eClerx, HSBC, Bajaj Allianz and many more visit our campus and offer excellent placements, so no need to worry about placements. The teachers and mentors are really helpful in giving you exposure. Almost all the students got good internships.

The teachers in our college are good. They help and guide us for placements and internships as well.

All the events conducted here are huge, and you will get to learn so much here.



Ms. Jaya Tripathi
PGDM Batch 2020-22
★★★★★

100% of the students got placed, even during pandemic. Top recruitment companies which come to our campus are Amazon, Byju's and many others. None of the students remain unplaced.

The infrastructure of our college is one of the major attractions. All classrooms are digital, and there are also proper Wi-Fi connections, well-equipped labs and properly designed mess, which are added advantage. The mess is properly sanitised, and special attention is given to cleanliness.

The curriculum of our college covers all the aspects of management, and the curriculum focuses on practical exposure. Staff members are highly qualified, and faculty members make the course and subject interesting. Faculty members provide proper guidance and support to all the students.

The best thing about this course is top roles like Sales Manager, Product Associate Manager, core finance roles, etc., are offered in our batch.

360° TESTIMONIALS

Student Testimonials



Ms. Shristi Sanjivani
PGDM Batch 2020-22



About 100% of students have been placed from our batch. The average salary package offered is around 7 LPA. BNY Mellon, eClerx, TIAA, Bajaj Allianz, Marriott, Hyatt Regency, Citi Bank, SalesKen, Crisil, S&P Global, Berger Paint, LG, PhonePe, NoBroker and Monster.com are top recruiters here. Investment Banking, Operations Manager, Associate Sales Manager, etc., are the top roles offered here.

Wi-Fi, Innovation lab, computer labs, library, groom room are available here. The quality of food served in our college canteen is really good and affordable. For the hostel facility, our college has tie-ups with Stanza, Zolo Stays, OxyLife, etc. Overall, the hostel is a good facility and affordable.

Most of the corporate sessions are conducted to make students ready for the industry. TEDx and international conferences are conducted by the college to increase the standards of the students and to enhance them with the learning and make them industry-ready.



Mr. Furquan Haque
PGDM Batch 2020-22



The college has a very good placement team, which provides a variety of placement options. The college is trying to expand its corporate connections. The placement team makes sure that all the students are placed in their field of interest. Some of the top recruiters for the college are TIAA, Marriott International, ICICI and many more.

The college has a very good infrastructure. It includes an auditorium, smart classrooms and labs.

The college has well-qualified and experienced faculty members. They are very supportive and helpful to students. The college follows open culture where students can directly approach the faculty members in case of any emergency. The curriculum of the college is very well-designed, keeping in mind the corporate expectations from the students.

360° TESTIMONIALS

Student Testimonials



Ms. Disha Upadhyay
PGDM Batch 2020-22



Campus placements are offered in the second year of the program. Lexicon MILE also offers 9 months internship. During the course placements are offered across various sectors depending on the student's specialization. Companies like TIAA, BNY Mellon, WNS, Lead School, Allstate India, and many topmost companies visited our campus for placements.

The admission process was a great experience for me as I had to fill the form for the admission procedure and after few days I was scheduled for my personal interview and was assigned a case study and on that basis, my selection was made.



Mr. Harsh Jain
PGDM Batch 2020-22



Almost 100% of the students got placed with an average salary package of 6.6 LPA. You can choose any specialisation and can play different roles in the company. Internships are also 100%, which is excellent.

All facilities of our college are good. Wi-Fi, hostel, labs and classroom are good. All students have medical & accidental insurance. In case of medical emergencies college also provide financial assistance.

Faculty members are highly experienced and qualified. Teachers are awesome. They are always very helpful and clear our doubts. You can reach any of the faculty members at any time for help.

360° TESTIMONIALS

Student Testimonials



Mr. Rajan Jha

PGDM Batch 2018-20



The placement department ensures that the best opportunities are provided to students. Companies like TIAA, Knight Frank, Cushman & Wakefield, Byju's, SG Analytics, Bajaj Finance, CBRE, Sintex, Amazon, Repos Energy and many more came for our campus placement.

The hostel life is amazing, and facilities like Wi-Fi are provided on the campus and also in the hostel. Food served in the mess is quite hygienic and healthy. One of the best things about the hostel is, you get to know different people from different places and a different mindset.

The curriculum of Lexicon MILE covers all the aspects of management. The curriculum focuses on practical exposure. Highly qualified staff and faculty make the course and subjects interesting. Faculty members provide proper guidance and support.

Campus life is amazing at our college. During our batch, we organised many events like Purple Fever, Skylar, etc., which provided us with practical exposure.

My journey at the institute has been really eventful. The practical exposure provided by the institute really helped me in growing as a professional. I am currently working with Bajaj Finserv as an Assistant Sales Manager. I really want to thank Lexicon MILE for always encouraging me and helping me in exploring various opportunities.



Mr. Pushkar Pandey

PGDM Batch 2019-21



100% of students get placed, everyone gets a paid internship. Pre placement offers made are pretty decent too. The average package is about 6.5-7 LPA, the highest is 14 LPA. Roles offered are Business Development Manager, Territory Sales Manager, Assistant Process Manager etc. Major recruiters for my batch are Amazon, Times of India, TIAA, eClerx, SG Analytics etc.

The infrastructure of Lexicon MILE is one of the major attractions. All classrooms are digital, proper Wi-Fi connection, well-equipped labs, properly designed mess are added advantage. The food is good, all sorts of cuisines are offered. The mess is properly sanitized and special attention is given to cleanliness. Hostels were excellent. All amenities such as Washing machines, Induction, LED TV, Wi-Fi, DTH, even cookware and refrigerator were provided which gave hostels a homely feel.

The teachers are very cooperative and friendly. A student can even connect with a teacher after the class and clear doubts. The mentor-mentee programme is a highlight which further strengthens the bonds between students and faculty. The proper discussion of case studies and roleplays make the lectures more engaging. The curriculum is best in itself as it covers everything one needs to learn before joining the corporate.

The reason why I chose Lexicon MILE was its curriculum, 9 months classroom programme followed by 9 months of internships gives its students edge over others. By the time the 2 years complete, students are industry-ready and have 9 months of experience in corporate already providing them with a better understanding of job roles. The Placements are provided in world-renowned organizations thus providing kick start to one's career. Events happen in a timely fashion, solely organized by students which makes it even more enjoyable. Proper corporate connects and exposure to the corporate world is one of the major highlights of this institution. Faculty members and placement team both are very cooperative and helpful.

360° TESTIMONIALS

Student Testimonials



Ms. Nakshita Arora
PGDM Batch 2019-21
★★★★★

Notwithstanding the effect of COVID-19, Lexicon MILE Batch 2019-2021 has the majority of its students interning with various top organizations such as IIFL, Alcor, Ocwen, Zolostays, Aditya Birla Group. Not only these, but some have also been working as Full-timers with TIAA, Times of India Group, BNY Mellon. Haier, Orient, and many other industry players. Looking at the records, the students from Finance, Marketing and HR domains are fairing well in companies. like Mahindra & Mahindra, Eclerx, OYO, AXA Business, ICICI, FIS, Jade Global, Allstate, 99acres.com, and many more corporate giants. Major roles offered in Finance are Financial Analyst, Inventory Manager, Account Manager, Audits, Client Services, and many more.

The campus is lively with all the comforts and luxuries. All the departments, classrooms, labs, library is fully air-conditioned and equipped with the latest technology. Each classroom has SmartBoards, the library has all kinds of books to quench the thirst of knowledge. The hostel is also pretty good with fresh airy rooms, separate cupboards for each. Food is also not a problem, you are served on time with proper meals. The canteen runs the entire day and serves fresh food. Basic medical needs are provided. The campus has ample space for sports like football, basketball, badminton, and others. Lexicon MILE also provides for various certification courses that are evident with changing trends of the industry and are a mandatory part of the curriculum.

The college provides for both the guest faculty and in house faculty who are just a call away when it comes to addressing the problems of students. They come with huge industry experience and expertise. The curriculum is designed in such a manner that it prepares the students to face the challenges of corporate life. The students gain both theoretical and industry knowledge before they actually step in the industry. Lexicon also supports the entrepreneurial views and start-up ideas of students.

The rigorous training provided by Lexicon MILE makes students ready to walk an extra mile in Industry.

Considering the time factor, no other institute provided for a nine-month training and theoretical knowledge simultaneously. Other factors like one-on one student approach, mentor-mentee programs, a vibrant crowd followed by cultural activities. The college also organizes an annual fest that provides students with real-life experience, exposure, and chances to meet various corporate representative. Rightly said, Change is the only constant phenomenon, so it is evident when it comes to an educational institute. With many changes happening every now and then, Lexicon MILE makes it easier for students to adapt to such dynamics.



Priyanshu
PGDM Batch 2019-21
★★★★★

100 percent placement record till now. 9 month Internship gives you full corporate exposure and gives you good knowledge. The package depends on your performance. There are different committees in which you can perform. There is paid internship where you can learn and earn. Companies are TIAA, TOI, AGS, eClerx and many more. Roles are offered in Marketing, HR and Finance depending on your preferences. Overall good choice to start your career.

Hostel facilities are more than expected. It is fully furnished with all the needful things, you can cook by yourself, washing machine, television etc. are provided. There is a mess committee which looks after all this and maintains the hygiene of food.

Teachers were very helpful as we can talk to them anytime and give all the necessary details about the subject. There are also some visiting faculties and also there are certification courses help you a lot.

I chose this course because of its 9 month internship programme and ROI is good.

360° TESTIMONIALS

Student Testimonials



Ms. Bithika Garg
PGDM Batch 2019-21
★ ★ ★ ★ ★

I was given different roles during my internship like Corporate Sales Consultant, Project Management Trainee, Sr. Product Compliance Associate. Some of the top Companies that came to the campus premises were Treebo, TIAA, SG Analytics, Allstate, IIFL Securities, Ondot Media, Amazon, KPMG, HR Services, CBRE, BYJU's, WhiteHat, Extramarks, Zolo Stays, Ocwen, Aditya Birla Capital and many more. The entire Batch is placed with either internships or final placement in the first year itself

We were provided with classrooms with smart boards, library, common rooms, medical room, language labs, Innovation labs (which was really helpful for someone who wants to go ahead with entrepreneurship). The mess food was also good. We had different varieties on different days.

The teachers were really helpful and very supportive. We could approach them anytime we wanted. They were always ready to help. They were our mentors too. So we could seek help from them for things apart from studies. Talking about the course, it focuses more on job training. So the students get more of practical knowledge which is really helpful in the long-term.

The best thing is the 9 months internship and the report preparations. The Institute helped me in improving my inner self, gaining more knowledge about different things. We also organized different events, like the college annual fest, TEDx & many more.



Ritwick Adhikari
PGDM Batch 2019-21
★ ★ ★ ★ ★

All eligible students got placed. Companies like LG, ZS, TIAA, PwC, Allstate, IKS, SWIGGY, YES BANK, Syntex, Repro, AXA, TATA AIG, OYO, WNS are top recruiting companies. The roles offered are Business Development, Research, Strategy, Talent acquisition, Audit, Financial Planning.

The classrooms are clean and with comfortable seating arrangements with the digital board. The classrooms are all centralized air conditioned. There is a capacity of 60 students per class. The library of our college consists of all the necessary books as well as e-books. Hostels are provided with OYO facilities as the college has a tie-up with OYO. The facilities are extremely good with fridge, TV, Wi-Fi, washing machine & inverter.

All the teachers available here are extremely qualified ones with good teaching methodology and one to one interaction for better guidance. The faculty members are helpful and cooperative. The course will make you face the corporate world. It will make you industry-ready.

The induction programme although tough but this will toughen you up for any further difficulties. There are several ongoing events which you can be an active part of throughout the year.

360° TESTIMONIALS

Student Testimonials



Ms. Priya Raina
PGDM Batch 2019-21
★★★★★

Lexicon MILE was recently awarded with 'Best Placement Institute for Placement' 2020. The average salary package offered is 7.5 LPA. Top recruiting companies of our college are SG Analytics, TIAA, AGS, Treebo, ICICI, TOI, Eclerx, CBRE, FIS, BNY Mellon etc. They groom you for personal interviews and show you the right path to achieve your goal. They assure that you choose the right company to start your career. This is the only college which provide 9 months internship with paid stipend. This college is student driven.

We have a personalised library, full Wi Fi campus, terrace, canteen, AC classrooms, huge playground and a huge auditorium. Every service is provided to the students. In hostels, they provide you every facility like cleaning of rooms everyday, monthly service of electrical equipments, full day water services and 24x7 Wi-Fi. They provide medical services to the students. All types of sports facilities are available at the college premises and every year student goes for national and international event.

All the teachers in our college are highly qualified, very cooperative, helpful and friendly. They guide and help you to solve your academic related problems even after working hours. They help the students to solve their personal issues and make students industry ready. They make you a person who can tackle various issues.

Every festival is celebrated here. Lexicon MILE respects all religions and caste which bring us on celebration of Holi, Ed, Lohri, New Year. We also have events like WOW Wednesday's in which students showcase there talent as well teacher's also show their skills. Recently Purple Fever which is annual event of MILE was conducted in a grand form which had events like Golf Tournament, Fashion Show, Gen Next Awards.



Biswajit Mishra
PGDM Batch 2019-21
★★★★★

Lexicon MILE has recently been awarded as Institute with the Best Placement 2020 by CEGR. The prominent recruiters here AGS, CBRE, TIAA, SG Analytics, Ocwen, eClerx, BNY Mellon, ICICI Bank, Kotak Mahindra, IDBI, Treebo, Oyo, ZS Associates, Times of India, and the list continues. It's not even 7 months and more than 100 students have already received their internship offers with a handsome stipend. I am associated with the Placement Assistance Team and I feel really lucky to be placed with AGS Transact Technologies Pvt Ltd where students from different IIMs and Symbiosis will also be joining along with me. Mr. Chandrakant Singh- Director Placements is the best mentor that I have ever had in my life and I have learnt a lot of things from him before starting my career in one of the major corporate houses.

Our institute has collaborated with OYO Life. Hence, our rooms are well-equipped with all the amenities such as refrigerator, Wi-Fi, TV, washing machine, induction.

We have the most unique curriculum designed to meet the knowledge required to cope with the latest technological and industrial trends. We also have an Innovation Lab where we can implement our ideas to innovate and develop new projects. The Winter Internship Project is one of the best experiences that I witnessed at Lexicon MILE.

360° TESTIMONIALS

Student Testimonials



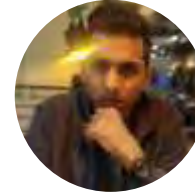
Muskan Agarwal
PGDM Batch 2019-21
★★★★★

Almost 100% of the students get placed from college. Top recruiting companies of our college are TIAA, Times of India, CBRE, White Hat Jr., Cognizant, Amazon, SG Analytics, Aditya Birla Sun Life, etc. Top roles like Sales Manager & Product Associate Manager are offered for our Batch.

The infrastructure of the college is very good, and anyone can like it easily. The quality of food served in the mess and canteen is also very good and healthy. There are separate medical rooms for boys and girls. We have Wi-Fi campus, labs, library, and air conditioned classrooms.

This course curriculum is relevant and it makes the student industry-ready. Teachers and everyone else on the campus are very helpful and highly educated. Mostly all the study is based on the cases which help the student to think practically and relate things with real life.

The best thing about this course is that it has a trimester curriculum and students can start earning from their second year with the help of 9 months internship. It has a student-driven college so all the events, fest, and activities are purely conducted by the students which helps them a lot in their management field.



Yash Nagvenkar
PGDM Batch 2018-20
★★★★★

Lexicon MILE has been consistently maintaining 100% placement record in placing the students in elite organisations in and around the country. Being a member of the placement assistance team, I interacted with different HRs and other corporates, which provide me with practical exposure in the corporate world.

Lexicon MILE has recently shifted to a brand new building which was loaded with the latest technology aids making the learning interesting and proactive. This is one of the best B-school building in Pune, and it focuses on digital learning and adapting it with technological advances.

The institute has one of the best intellectual faculty members to educate the students in the field of management by making them corporate ready with the required knowledge and information. Learning gets very interesting with the help of their inputs and efforts.

Various activities like induction, festival celebrations, Winter Internship Programme, One student at a time approach, and personality development classes by celebrities and actors help in grooming us to become perfect proactive managers.

360° TESTIMONIALS

Student Testimonials



Ms. Harshita Sharma
PGDM Batch 2018-20
★★★★★

Lexicon MILE is an amazing place to learn and to get ahead in your career. It's loaded with fully supportive teachers and seniors!" All the staff and students are very helpful and everyone has their own stories and experiences to share. Lexicon MILE creates an open environment so we can talk about our future goals and aspirations" Its a place where I learnt different things to achieve my goals. Lexicon MILE prepared me on how to interact with people and helped in increasing the level of confidence. I have developed immensely in a positive way. I would like to thank Lexicon MILE family for helping me in my career path.



Ayush Uniyal
PGDM Batch 2018-20
★★★★★

Lexicon MILE aims to provide fair and equal access to everyone. Students here are not restricted to particular specialization rather they gain sufficient exposure to different management functions both practically and theoretically. Students here are provided with Mentors who focus on personal grooming. A lot of seminars and conferences like entrepreneurship conferences are held very frequently that give a lot of practical exposure. The best part of academics is most of the facilities are visiting and that too with great experience, so we get a great intellectual resources and have a chance to learn from their experience. And in every trimester we get new intellectuals. Frequent expert lectures and seminars help us to get real time experience of trends in corporate. The certification programs also help us to think out of the box and stand out of the crowd.



Swati
PGDM Batch 2019-21
★★★★★

Top Recruiting companies are TOI, TIAA, Team Computers, BNY Mellon, Amazon, Treebo, ONDot Media. 100% students got internship. Top roles offered were of Corporate Sales Consultant, Financial Analyst, BDE, Market Research.

Hostel life was the best. Batch of 19 - 21 got a lot of luxuries like Wi-Fi, washing machine, refrigerator, induction etc. The classroom is fully digitalised, the college has a big playing area including football and basketball court. The food is delicious and is fully run by the Students' Council. There's a Medical Room in the college. The college conducts Zumba classes on alternative Wednesdays and can even showcase their talents on the last Wednesday of the week.

The teachers specialise in their field and hold expertise in the subject. The course curriculum is designed keeping in mind the syllabus of AICTE and the 9 months internship programme make the students industry ready. The college provides extra certificate courses as well like French, German, Excel, Digital Marketing & innovation class.

The batch of 19-21 witnessed a lot of events like the TEDx, Golf tournament, GenNext Awards, Corporate Connect etc.

360° TESTIMONIALS

Corporate Testimonials

“ Would like to take this opportunity to thank Lexicon MILE Institute for the tremendous support in providing the best quality students to us. We have never faced any behavioural issues or major attrition from any of the students. They have always been great performers and bagged various rewards & recognition at Allstate. Impressive to see them growing

-Virgina Sebastian,
Allstate India Pvt. Ltd.

“ Lexicon MILE has been a catalyst in providing quality talent whenever needed. We have recruited few of their students and each one of them have exceeded our expectations. The exper institute is highly professional and does understand our requirements very well. We would definitely like to work with them on a long term basis.

-Varun Sharma, Times Group

“ I have been visiting Lexicon MILE for hiring purpose since two years. It has always been a great knowledge sharing experience here. I have always had good interactions at this place. Everyone here is keen to learn new things. Also the energy and enthusiasm levels are always upto the mark be it work or fun activities.

- Leo Carvalho, Sr Human Resources Executive, CBRE

“ Lexicon Management Institute of Leadership & Excellence is a much sought after institute among the Corporate's for the very reason of quality of students that one gets from there. The team there ensures that the entire campus process is a seamless affair and the best. of talent comes to us. Kudos to the team Lexicon!

-Vishal Bhargava, TIAA

“ Treebo has been one of the prominent recruiters at Lexicon since the last few years. What stands out at this institute is it's one of a kind corporate interface program with a 9M internship schedule helping the student to get real-time industry exposure for a good amount of time. Appreciate the fact that the institute works around the feedback of the recruiters YOY to add/modify what the industry needs.

-Mohammed Sufiyan Sait,
Treebo Hotels

“ Acquiring good talent is tough" however, Lexicon MILE helped bridge the: gaps and made this journey of finding good talent a little less. tough. The curriculum designed by Lexicon MILE faculties and management has helped students to step into the corporate world with utmost confidence. I have always found MILERS, high on IQ, EQ both, and are flexible enough to be molded into the job role and become culturally fit for the organization. The students are always willing to put extra efforts to learn & grow in their respective verticals suo motu their watchword- "In the pursuit of 25th Hour.

-Nitin Rohilla, Manager - Talent Acquisition - Zolostays Property Solutions Pvt Ltd

“ This has been second year we are working with Lexicon MILE. the experience is been always excellent from students quality and support from the placement team. Special thank you to Mr. Chandrakanth for supporting us in hiring right talent.

-Mr. Rakesh Adhangale,
Lead School

360° TESTIMONIALS

Parent Testimonials

“Preparing lessons, imparting the best of learning and at the same time maintaining discipline by keeping them engaged with various activities, to boost their confidence. All this calls for the highest appreciation. Thank you so much Lexicon MILE.”

- Mrs. Indu Bala
(Mother of Harshita Sharma)

“Never seen him clicking a selfie before, and if he has been clicking one with his Degree, he is proud. That is all we wanted; he realizes his potential.”

- Mr. Jagannath Vishnu Lawande
(Parent of Rajas Lawande)

“I really admire the positive and non-judgmental attitude toward students. It really took a lot of pressure off me and reduced my tension towards Ayush's future.”

“Thanks you so much for giving my son the clarity to focus & follow his heart as well as his head. The rapport between you gave me trust & confidence, I loved the fact that Lexicon MILE is organized & focused in similar ways it gave me peace of mind to not worry. Thank you for your learning, but most importantly, thank you for your care & support.”

- Mr. Arun Kumar Uniyal
(Father of Ayush Uniyal)

“Pushkar has always been focused on his career from a very young age. We did a lot of analysis before he chose Lexicon MILE. Being a parent, I have been satisfied with his decision. Frequent updates about c his academics, made me feel more confident. He was placed in a reputed organization and is currently working, I am glad we chose Lexicon MILE which became a second home for my son.”

- Mr. H. C Pandey
(Father of Pushkar Pandey)





**POST GRADUATE DIPLOMA
IN MANAGEMENT (PGDM)
AICTE APPROVED (1-4259511)**

PGDM COURSE STRUCTURE

It is an AICTE approved course with dual specialization. The first year of curriculum is focused more on theoretical learnings and final year on practical learnings & applications through internships. The course curriculum is always updated and kept relevant with the industry needs.

USPs of Post Graduate Diploma in Management (PGDM)

- Intensive, structured and phased Induction in Goa.
- Minimum 9 months paid internship encompassing long term industry internship to bridge the fresher's work experience and domain knowledge.
- 10 days Winter Internship Project in association with Ministry of Forest, Govt. of Maharashtra. Students conduct survey/study in rural Maharashtra, on the subject given by the Forest Department.
- During the course the students also learn the nuances of Golf - a distinct and important feature of this course. This helps them in networking with top business leaders & their career advancement.
- Digital Empowered learning journey.
- Access to LinkedIn Learning for all students.
- Continued focus & relevant exposure to prepare students to become Day Zero Professionals.
- Structured corporate grooming & Personal Branding sessions in each trimester.
- Effective & continued handholding and support by academic mentors through out students' journey with Lexicon MILE.
- Opportunity to work with National and International Brands.
- Classes on communication skills to improve English Proficiency, language skills and business etiquette.
- Inculcating scholarly excellence by mandatory Research Paper writing for conferences.



List of specialisations offered

- a. Marketing
- b. Research and Business Analytics
- c. Human Resource
- d. Finance

Additionally students can choose any one of the Electives from list below:

- a. Marketing
- b. Research and Business Analytics
- c. Human Resource
- d. Finance

Additional Certifications

Supply Chain Management

Effective Supply Chain meets customer service requirements at the operational cost. It is the life line of any business activity. Supply Chain disruptions featured strongly during the Covid-19 pandemic. The Certificate gives you an insight of SCM.

Golf Basics

The importance of 'Play the Game' & networking are obvious. This certificate gives an understanding of the basic elements of Golf. Expert guidance.

German Language

Language connects & brings people closer. It is amongst the ten most popular languages in the world. It is useful for further studies or working abroad. The certification is divided into basics followed by advanced German language.

Digital Marketing

Any Digital marketing activity helps reach out to wider audiences. Hence, it is involved in scaling up of business operations. Fundamental of Digital Marketing covers Search Engine Optimization, Social Media Marketing, Content Marketing and Email Marketing.

MS Office

This certification focuses on mastering Word, Excel and PowerPoint. Employers rate MS Office skill proficiency highly from potential recruits.

Neuro Linguistic Programming (NLP)

NLP is a way of thinking, an attitude of curiosity, learning, and respect for others. It is the practice of understanding how they think, feel, behave, and what results they produce. NLP comes from three different disciplines, all of which are used and explored throughout this NLP certification.

Personal Branding

If you want to promote yourself as a personal brand, this course is for you. It makes no difference whether you are a one-man show, an entrepreneur, or an employee. You will learn how to strengthen your personal brand to increase your market visibility or land a more rewarding job.

Fundamentals of Project Management

This course fulfils the need for a combination of skills, knowledge, methods, and experience of different project management frameworks to achieve its concrete objectives.

Conflict Resolution

Maintaining positive relationships with clients and others requires a thorough understanding of conflicting ideas and how to manage and resolve it. This course will teach you how to understand, control, and manage difficult situations as well as how to deal with conflicts effectively.

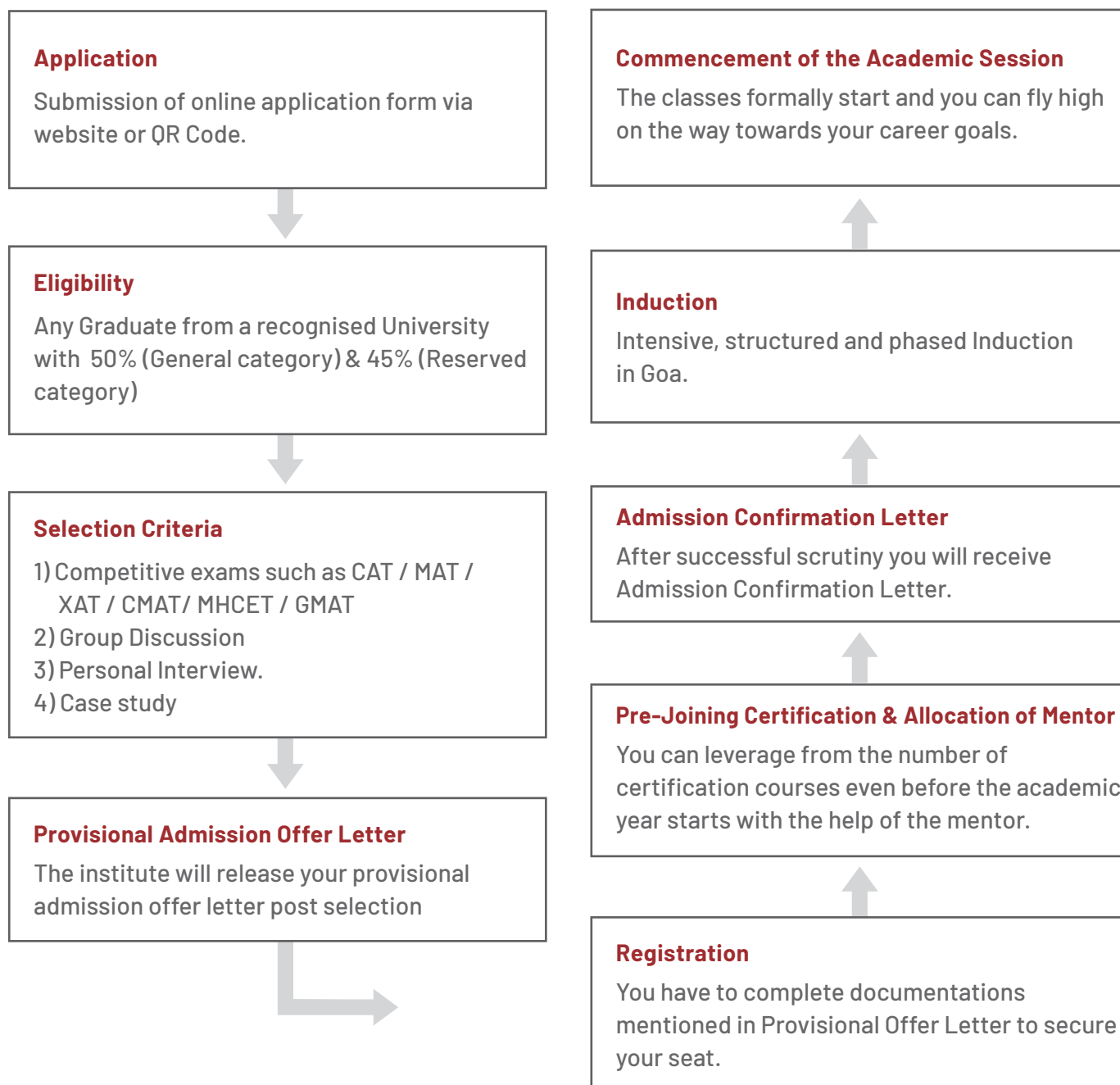
Basics of Portfolio Management & Crypto Currency Trader Certificate

This course combines the basics of portfolio management with comprehensive crypto currency trader learning. It serves as a road map for your personal and technical/financial cryptocurrency success. This course includes all of the tools you need to be successful with cryptocurrencies and portfolio management.

LinkedIn Learning

Institute has provided complete access to LinkedIn Learning to get certified in areas of their interest and at their own pace.

ADMISSION PROCESS - PGDM



SCAN TO APPLY

Website link to apply
<https://lexicon.nopaperforms.com/>



TRIMESTER WISE PROGRAM DETAILS

TRI-I

Sr. No.	SUBJECTS
1	Managerial Economics
2	Research Methodology
3	Managerial Accounting
4	Organizational Behaviour
5	Basics of Marketing Management

Sr. No.	SUBJECTS
6	Human Resource Management
7	Quantitative Techniques
8	Production & Operations Management
9	Legal Aspects of Business
10	Managerial Communication

TRI-II

CORE SUBJECTS	
1	Financial Management
2	Marketing Research
3	Diversity & Inclusion
MARKETING	
4	Product & Brand Management
5	Integrated Marketing Communication
6	Consumer Behaviour
7	Sales & Distribution
8	Services Marketing
FINANCE	
9	Taxation
10	Mergers and Acquisitions
11	Financial Services
12	Strategic Cost Management
13	International Finance

HUMAN RESOURCE	
14	Organizational Development
15	Training and Development
16	Conflict and Negotiation
17	Employee Relations & Labour Laws
18	Performance Management Systems
RESEARCH & BUSINESS ANALYTICS	
19	Fundamentals of Business Analytics
20	Datatypes & structures
21	Advanced Statistics & Quantitative Techniques
22	Project Management
23	Project Work-I

TRI-III

Sr. No.	SUBJECTS
1	Corporate Research & Learning Internship

TRIMESTER WISE PROGRAM DETAILS

TRI-IV

CORE SUBJECTS	
1	Strategic Management
2	Business Ethics
MARKETING	
3	Industrial Marketing
4	Retail Marketing
5	Rural Marketing
6	International Marketing
FINANCE	
7	Corporate Finance
8	Security Analysis and Portfolio Management
9	Money and Capital Markets
10	Banking and Insurance

HUMAN RESOURCE	
11	Compensation & Benefits
12	HRIS
13	Competency Mapping
14	Strategic Human Resource Management (SHRM)
RESEARCH & BUSINESS ANALYTICS	
15	Advanced Business Analytics
16	Advanced Analytics Tools-R Analytics, Python & Excel
17	Data Visualization Tools - Power BI / Tableau
18	Applied Analytics- Marketing/HR / Finance /Other

TRI-V

Sr. No.	SUBJECTS
1	Corporate Research & Learning Internship

TRI-VI

Sr. No.	SUBJECTS
1	Corporate Research & Learning Internship

PGDM COURSE FEES

Part A: Batch 2022-24 Tuition Fees

Sr. No.	Particulars	Amount
1	Registration Fees	INR 50,000/- (Fifty Thousand Only)
2	First Year Tuition Fees (1 st Installment)	INR 1,00,000/- (One Lakh Only)
3	First Year Tuition Fees (2 nd Installment)	INR 2,50,000/- (Two Lakh Fifty Thousand only)
4	Second Year Tuition Fees	INR 4,00,000/- (Four Lakh Only)
TOTAL FEES		INR 8,00,000/- (Eight Lakh only)
Examination Fees (Per Trimester)		INR 4,500/- (Four Thousand Five Hundred Only)

Account Details for Fees Payment

Account Holder	Lexicon Management Institute of Leadership & Excellence
Account No.	7611533804
Type of Account	Savings Account
Bank Name	Kotak Mahindra Bank Ltd
Branch	Ramwadi, Pune - Nagar Road, Pune
IFSC Code	KKBK0000730

*Refund – As per AICTE refund policy applicable to academic year 2022-23 admissions.

Disputes - All disputes are subject to Pune Jurisdiction only

PGDM COURSE FEES

Part B: Batch 2022-24 Other Fees

Sr. No.	Particulars	Amount
1	Alumni Fees (One Time)	INR 20,000/- (Twenty Thousand Only)
2	Administration Fees (One Time)	INR 25,000/- (Twenty Five Thousand Only)
3	Caution Deposit (Refundable)	INR 5,000/- (Five Thousand Only)
Total Fees		INR 50,000/- (Fifty Thousand Rupees Only)

Account Details for Fees Payment

Account Holder	Lexicon Management Institute of Leadership & Excellence - A unit of LLPL
Account No.	5111793292
Type of Account	Current Account
Bank Name	Kotak Mahindra Bank Ltd
Branch	Ramwadi, Pune - Nagar Road, Pune
IFSC Code	KKBK0000730

*Refund – As per AICTE refund policy applicable to academic year 2022-23 admissions.

Disputes - All disputes are subject to Pune Jurisdiction only

PROGRAMS IN PARTNERSHIP WITH UNIVERSITY OF SOUTH WALES, UNITED KINGDOM

With a history of more than 100 years, University of South Wales (USW) is a modern, industry-focused, Public University which is accredited and recognized by the Privy Council and many other professional organizations. Educational programs at USW are The Quality Assurance Agency (QAA), UK certified educational programs for high standards of teaching, learning and research. University of South Wales is a truly International University with students from all over the Globe.

MASTER IN BUSINESS ADMINISTRATION GLOBAL, POST GRADUATE PROGRAMME IN MANAGEMENT (80 + 100 Credits)

Program Objectives:

To prepare and equip the students academically and experientially to face global economic challenges and economic highs in a competitive corporate world. To develop people skills and pursue overall excellence in a global environment.

Program Features:

- International exposure
- Wider professional network
- Updated industry 4.0 course curriculum
- Distinguished global faculty pool
- Affordable global experience

Additional Certifications:

- **MS Office** - This certification focuses on mastering Word, Excel and Powerpoint. Employers rate MS Office skill proficiency highly from potential recruits.
- **Digital Marketing** - Any Digital marketing activity helps reach out to wider audiences. Hence, it is involved in scaling up of business operations. Fundamentals of DM cover in the certification includes SEO, SMM, Content Marketing and Email Marketing.
- **SCM (Supply Chain Management)** - Effective Supply Chain meets customer service requirements at the operational cost. It is the life line of any business activity. Supply Chain disruptions featured strongly during the Covid-19 pandemic. The Certificate gives you an insight of SCM.

- **NLP-Neuro Linguistic Program**

NLP is a way of thinking, an attitude of curiosity, learning, and respect for others. It is the practise of understanding how individuals do what they do; by that, we mean how they think, feel, behave, and what results they produce. NLP comes from three different disciplines, all of which are used and explored throughout this NLP certification.

- **Conflict Resolution**

Maintaining positive relationships with clients and others requires a thorough understanding of conflict and how to manage and resolve it. You may have excellent communication skills, but you will run into trouble if clients continue to demand something you cannot offer or provide in the manner they desire. This course will teach you how to understand, control, and manage difficult situations as well as how to deal with conflict effectively.

- **Basics of Portfolio Management & Crypto Currency Trader Certificate**

This course combines the basics of portfolio management with comprehensive crypto currency trader learning. It serves as a road map for your personal and technical/financial cryptocurrency success. This course includes all of the tools you need to be successful with cryptocurrencies and portfolio management.

- **English Language Preparation & Training**

Acceptable USW requirements for English Language competence is mandatory. Some of the qualifying tests are Duolingo, IELTS, PTE etc.

TERM WISE PROGRAM DETAILS:

Term 1 at Lexicon Management Institute of Leadership & Excellence

(Credit accumulation for MBA - Global at University of South Wales)

SR. NO.	SUBJECTS
1	Organization Behaviour and Human Resource Management
2	Leadership Skills
3	Introduction to Marketing
4	Future Trends in Marketing
5	Managerial Accounting
6	Financial Management
7	Operations Management
8	Evolving Technologies

Term 2 at Lexicon Management Institute of Leadership & Excellence

(Credit accumulation for MBA - Global at University of South Wales)

SR. NO.	SUBJECTS
1	Cross Culture Learning
2	Business Ethics and Corporate Social Responsibility
3	Industrial Marketing
4	International Marketing
5	Corporate Finance
6	Security Analysis and Portfolio Management
7	Production Planning & Control
8	Service in Operations

Term 3 at University of South Wales, UK

- Global Strategy and Emerging Markets
- Project Management and Consulting Skills
- Global Challenges

Term 4 at University of South Wales, UK

- Placements & Specialization specific Capstone Project

Term 5 at Lexicon Management Institute of Leadership & Excellence

Industry preparedness

Project, Internship, Dissertation

- Placement Acumen Training
- Industry Preparedness courses: XIs, Mock Interview, Debate, etc.
- Diversity and Inclusion
- Industry Fitment Training
- Aptitude Training

Entry requirement:

- Bachelors Degree in any field with a minimum aggregate of 55%
- Valid Passport

Criteria to progress to Term 3:

- IELTS overall score of 6 and no band below 5.5 on the scale of 9 or equivalent
- Pass all the subjects of Term 1 and Term 2
- Get a successful General student VISA (Tier 4) to study in the UK.
- Please go through the UK Government website (<https://www.gov.uk/tier-4-general-visa>) to know more about VISA procedure and documents requirement.

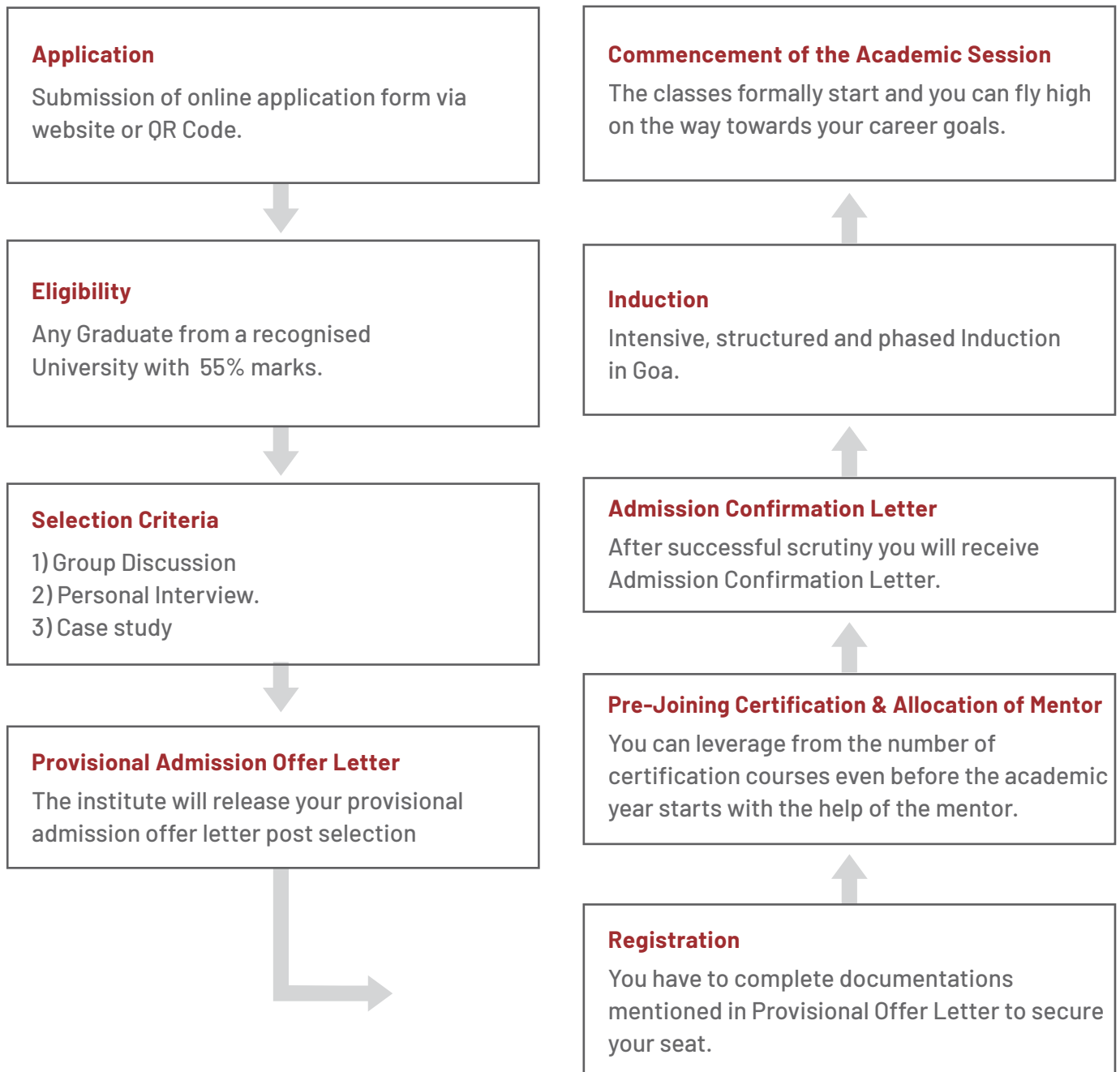
Note: You will be given assistance for VISA application during your association at Lexicon Management Institute of Leadership & Excellence.

Careers after program:

Global Supply Chain Manager
Multinational Marketing Manager
International HR Manager
Manager - International Business
Project Manager
Manager Business Finance



ADMISSION PROCESS - GLOBAL MBA, USW, UK



SCAN TO APPLY

Website link to apply
<https://lexicon.nopaperforms.com/>



PGPM, MBA GLOBAL COURSE FEES

Part A: Tuition Fees of Lexicon Management Institute of Leadership & Excellence

Sr. No.	Particulars	Amount
1	Registration Fees	INR 1,50,000/- (One Lakh Fifty Thousand Only)
2	Tuition Fees (1st Installment)	INR 2,40,000/- (Two Lakh Forty Thousand Only)
3	Tuition Fees (2nd Installment)	INR 3,35,000/- (Three Lakh Thirty Five Thousand only)
Total Fees		INR 7,25,000/- (Seven Lakh Twenty Five Thousand only)

Account Details for Fees Payment

Account Holder	Lexicon Management Institute of Leadership & Excellence
Account No.	2945111230
Type of Account	Savings Account
Bank Name	Kotak Mahindra Bank Ltd.
Branch	Ramwadi, Pune - Nagar Road, Pune
IFSC Code	KKBK0000730

*Refund - As per Global Programme refund policy applicable to academic year 2022-23.

Disputes - All disputes are subject to Pune Jurisdiction only

PGPM, MBA GLOBAL COURSE FEES

Part B: Other Fees of Lexicon Management Institute of Leadership & Excellence

Sr. No.	Particulars	Amount
1	Alumni Fees (One Time)	INR 50,000/- (Fifty Thousand Only)
2	Administration Fees (One Time)	INR 50,000/- (Fifty Thousand Only)
3	Examination Fees	INR 15,000/- (Fifteen Thousand Only)
Total Fees		INR 1,15, 000/- (One Lakh Fifteen Thousand Only)

Account Details for Fees Payment

Account Holder	Lexicon Management Institute of Leadership and Excellence - A Unit of LLPL
Account No.	5111793292
Type of Account	Current Account
Bank Name	Kotak Mahindra Bank Ltd.
Branch	Ramwadi, Pune - Nagar Road, Pune
IFSC Code	KKBK0000730

*Refund - As per Global Programme refund policy applicable to academic year 2022-23.

Disputes - All disputes are subject to Pune Jurisdiction only

PGPM, MBA GLOBAL COURSE FEES

Part C: University of South Wales Fees

Sr. No.	Particulars	Amount
1	Tuition Fees	GBP 5,000/-

Account Details for USW, UK Fees Payment will be provided seperately after receiving Order Letter from USW



PROGRAMS IN PARTNERSHIP WITH UNIVERSITY OF NEW HAVEN, UNITED STATES OF AMERICA

The University of New Haven was established in 1920 at West Haven, Connecticut. The University is situated on approximately 122 acres of land. The University includes, Arts & Science College, College of Business, the College of Criminal Justice and Forensic Sciences & the School of Health Sciences.

The Pompea College of Business under University of New Haven runs the Business Analytics Programmes. The basic objective of the Master's Program in Business Analytics is to help convert large amount of data into information and information into profit.

POST GRADUATE PROGRAM IN MANAGEMENT, MASTER OF SCIENCE IN BUSINESS ANALYTICS (9 + 21 Credits)

Program Objectives:

The program is specifically designed to focus on data conversion to information. It also aims at predictive analysis and visualization for the best possible results. The program is specifically designed to increase business profitability, enhance productivity, improve operations and enrich decision making.

Program Features:

The basic feature of the MS BA program is to focus on techniques required to convert data into information thereby enabling managerial decision-making process. There is an expected rise of 11% in Data Analytics jobs by the year 2024, from the current job openings. The program aims to observe patterns in big data for further business analysis.

Additional Certifications

MS Office - This certification focuses on mastering Word, Excel and Powerpoint. Employers rate MS Office skill proficiency highly from potential recruits.

Digital Marketing - Any Digital marketing activity helps reach out to wider audiences. Hence, it is involved in scaling up of business operations. Fundamentals of Digital marketing cover in the certification includes SEO, SMM, Content Marketing and Email Marketing.

English Language Preparation & Training

Acceptable USW requirements for English Language competence is mandatory. Some of the qualifying tests are Duolingo, IELTS, PTE etc.

NLP-Neuro Linguistic Program

NLP is a way of thinking, an attitude of curiosity, learning, and respect for others. It is the practise of understanding how individuals do what they do; by that, we mean how they think, feel, behave, and what results they produce. NLP comes from three different disciplines, all of which are used and explored throughout this NLP certification.

Conflict Resolution

Maintaining positive relationships with clients and others requires a thorough understanding of conflict and how to manage and resolve it. You may have excellent communication skills, but you will run into trouble if clients continue to demand something you cannot offer or provide in the manner they desire. This course will teach you how to understand, control, and manage difficult situations as well as how to deal with conflict effectively.

Basics of Portfolio Management & Crypto Currency Trader Certificate

This course combines the basics of portfolio management with comprehensive crypto currency trader learning. It serves as a road map for your personal and technical/financial cryptocurrency success. This course includes all of the tools you need to be successful with cryptocurrencies and portfolio management.

SCM (Supply Chain Management)

Effective Supply Chain meets customer service requirements at the operational cost. It is the life line of any business activity. Supply Chain disruptions featured strongly during the Covid-19 pandemic. The Certificate gives you an insight of SCM.

TERM WISE PROGRAM DETAILS:

Term 1 at Lexicon Management Institute of Leadership & Excellence

(Credit accumulation for MBA - Global at University of New Haven)

SR. NO.	SUBJECTS
1	Fundamentals of Business Analytics
2	Introduction to R-Studio
3	Fundamentals of Statistics & Quantitative Techniques
4	Basics of Marketing Management
5	Introduction to Operations Management
6	Fundamental Managerial Accounting
7	Project Work - I

Term 2 at Lexicon Management Institute of Leadership & Excellence

(Credit accumulation for MBA - Global at University of New Haven)

SR. NO.	SUBJECTS
1	Advanced Business Analytics
2	Introduction to Tidyverse
3	Marketing Management
4	Advanced Operations Management
5	Managerial Economics
6	Financial Management
7	Project Work - II

Term 3 & Term 4 at University of New Haven, USA

Subjects

- Data Visualization and Communication
- Database Management for Business Analytics
- Power BI and Dash boarding
- Mining for Business Intelligence
- Business Analytics Capstone

Elective Subjects (Pick any 2)

- Marketing Analytics
- Global Supply Chain Management
- Managing Quality in the Supply Chain

Entry requirements:

- Requires aggregate 60%.
- Either 3 years Degree from NAAC A grade accredited institute or 4 years Graduation degree not from NAAC A grade accredited institute.

Criteria to progress to Term 3:

- Must have passed all the subjects of Term 1 and Term 2.
- IELTS overall 6.5 and no band below 6.0 on the scale of 9 or equivalent.
- GRE Verbal 150 and QA 153.
- Get a successful student VISA (F-1) to study in the USA. Please go through the USA Government website (<https://travel.state.gov/content/travel/en/us-visas/study/student-visa.html>) to know more about VISA procedure and documents requirement.

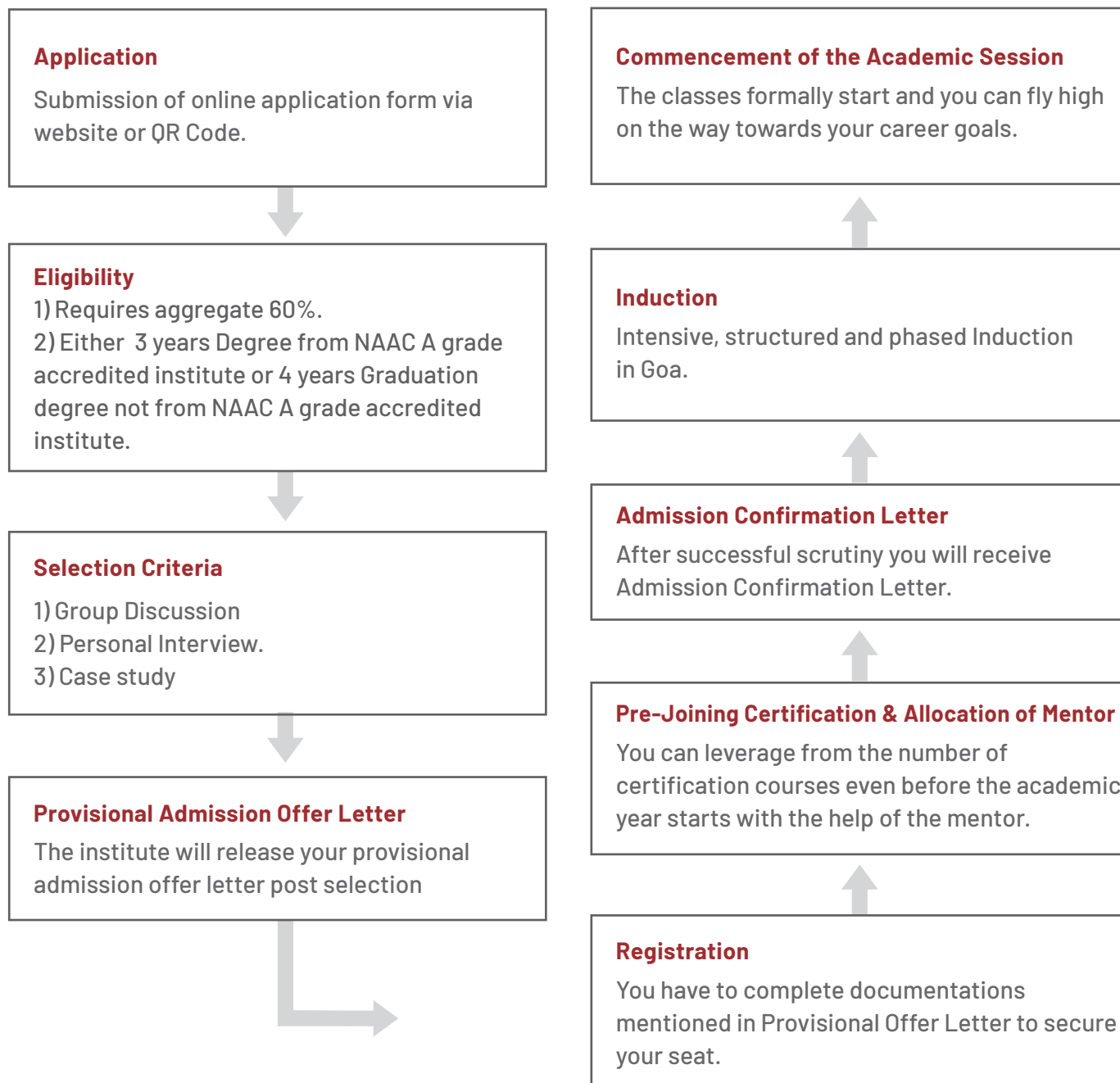
Note: You will be given assistance for VISA application during your association at Lexicon Management Institute of Leadership & Excellence.

Careers after the program:

Management Analyst
Operation Research Analyst



ADMISSION PROCESS - INTERNATIONAL MBA, UNH, US (9+21 Credits)



SCAN TO APPLY

Website link to apply
<https://lexicon.nopaperforms.com/>



POST GRADUATE PROGRAM IN MANAGEMENT, MASTER OF BUSINESS ADMINISTRATION (9 + 25 Credits)

Program Objectives:

The program focuses on the dynamic ever-changing business environment and real life experiences that can help student learn, assimilate, imbibe and use knowledge for solutions to corporate problems. It also focuses on experiential learning for the course to remain impactful. The program also helps would be entrepreneurs realize their latent passions and convert the same into viable organizations.

Program Features:

The program is ideal for students wanting to start their corporate lives as managers. The course work covers the core elements of business such as finance, marketing, economics, management, accounts etc. The course work also focuses on elaborate and exhaustive projects honing the managerial skill of students.

Additional Certifications

MS Office - This certification focuses on mastering Word, Excel and Powerpoint. Employers rate MS Office skill proficiency highly from potential recruits.

Digital Marketing - Any Digital Marketing activity helps reach out to wider audiences. Hence, it is involved in scaling up of business operations. Fundamentals of Digital Marketing cover in the certification includes SEO, SMM, Content Marketing and Email Marketing.

English Language Preparation & Training

Acceptable USW requirements for English Language competence is mandatory. Some of the qualifying tests are Duolingo, IELTS, PTE etc.

NLP-Neuro Linguistic Program

NLP is a way of thinking, an attitude of curiosity, learning, and respect for others. It is the practise of understanding how individuals do what they do; by that, we mean how they think, feel, behave, and what results they produce. NLP comes from three different disciplines, all of which are used and explored throughout this NLP certification.

Conflict Resolution

Maintaining positive relationships with clients and others requires a thorough understanding of conflict and how to manage and resolve it. You may have excellent communication skills, but you will run into trouble if clients continue to demand something you cannot offer or provide in the manner they desire. This course will teach you how to understand, control, and manage difficult situations as well as how to deal with conflict effectively.

Basics of Portfolio Management & Crypto Currency Trader Certificate

This course combines the basics of portfolio management with comprehensive crypto currency trader learning. It serves as a road map for your personal and technical/financial cryptocurrency success. This course includes all of the tools you need to be successful with cryptocurrencies and portfolio management.

SCM (Supply Chain Management)

Effective Supply Chain meets customer service requirements at the operational cost. It is the life line of any business activity. Supply Chain disruptions featured strongly during the Covid-19 pandemic. The Certificate gives you an insight of SCM.

TERM WISE PROGRAM DETAILS:

Term 1 at Lexicon Management Institute of Leadership & Excellence

SR. NO.	SUBJECTS
1	Fundamentals of Business Analytics
2	Basics of Marketing Management
3	Introduction to Operations Management
4	Fundamental Managerial Accounting
5	International Business - I
6	Fundamentals of Statistics & Quantitative Technique
7	Managerial Economics
8	Project Work - I

Term 2 at Lexicon Management Institute of Leadership & Excellence

SR. NO.	SUBJECTS
1	Leadership & Teams
2	Marketing Management
3	Organizational Development
4	Financial Management
5	International Business - II
6	Strategic Management
7	Corporate Finance
8	Project Work - II

Term 3 & Term 4 at University of New Haven, USA

Courses at UNH | Core Courses

- Leadership and Team Building
- Managerial Accounting
- Corporate Finance
- Leading Organizational Strategy and Change
- Managing in a Global Economy
- Strategic Management

Students will take either two additional restricted elective courses for a General MBA or the four courses for the STEM certified.

Specializations:

- Data Analytics (STEM-certified)
- Financial Analysis (STEM-certified)
- Marketing and Digital Marketing (STEM-certified)

Entry requirements:

- Requires aggregate 60%.
- Either 3 years Degree from NAAC A grade accredited institute or 4 years Graduation degree not from NAAC A grade accredited institute.

Criteria to progress to Term 3:

- Pass all the subjects of Term 1 and Term 2.
- IELTS overall 6.5 and no band below 6.0 on the scale of 9 or equivalent.
- GRE Verbal 150 and QA 153.
- Get a successful student VISA (F-1) to study in the USA. Please go through the USA Government website (<https://travel.state.gov/content/travel/en/us-visas/study/student-visa.html>) to know more about VISA procedure and documents requirement.

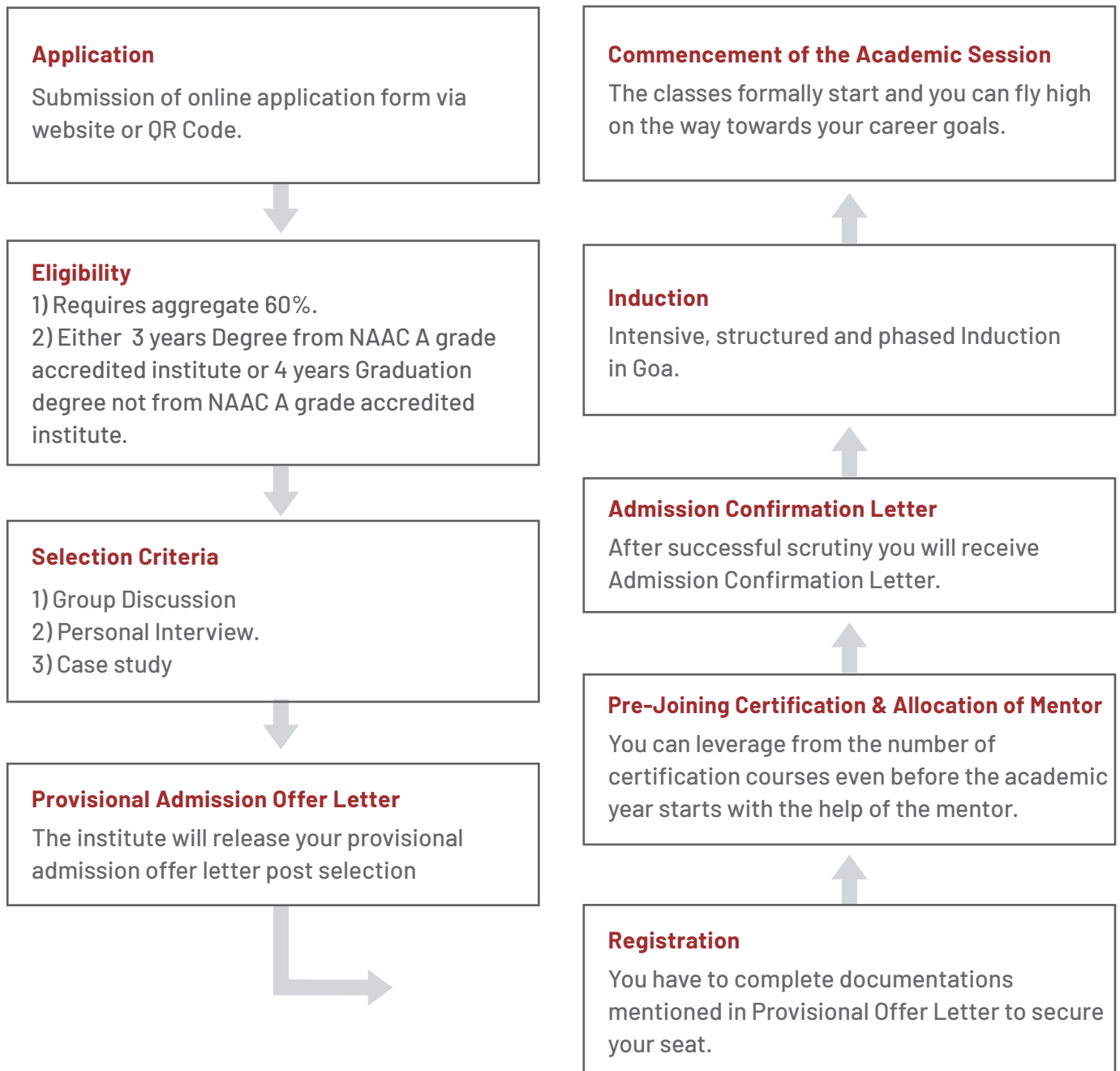
Note: You will be given assistance for VISA application during your association at Lexicon Management Institute of Leadership & Excellence.

Careers after program:

Marketing Analyst
Financial Analyst
Big Data Analyst
Human Resource Analyst



ADMISSION PROCESS - INTERNATIONAL MBA, UNH, US (9+25 Credits)



SCAN TO APPLY

Website link to apply
<https://lexicon.nopaperforms.com/>



MS, MBA, MBA (STEM) COURSE FEES

Part A: Lexicon Management Institute of Leadership & Excellence Fees

Sr. No.	Particulars	Amount
1	Registration Fees	INR 1,50,000/- (One Lakh Fifty Thousand Only)
2	Tuition Fees (1st Installment)	INR 2,40,000/- (Two Lakh Forty Thousand Only)
3	Tuition Fees (2nd Installment)	INR 3,35,000/- (Three Lakh Thirty Five Thousand only)
Total Fees		INR 7,25,000/- (Seven Lakh Twenty Five Thousand only)

Account Details for Fees Payment

Account Holder	Lexicon Management Institute of Leadership & Excellence
Account No.	2945111230
Type of Account	Savings Account
Bank Name	Kotak Mahindra Bank Ltd.
Branch	Ramwadi, Pune - Nagar Road, Pune
IFSC Code	KKBK0000730

*Refund - As per Global Programme refund policy applicable to academic year 2022-23.

Disputes - All disputes are subject to Pune Jurisdiction only

MS, MBA, MBA (STEM) COURSE FEES

Part B: Other Fees of Lexicon Management Institute of Leadership & Excellence

Sr. No.	Particulars	Amount
1	Alumni Fees (One Time)	INR 50,000/- (Fifty Thousand Only)
2	Administration Fees (One Time)	INR 50,000/- (Fifty Thousand Only)
3	Examination Fees	INR 15,000/- (Fifteen Thousand Only)
Total Fees		INR 1,15,000/- (One Lakh Fifteen Thousand Only)

Account Details for Fees Payment

Account Holder	Lexicon Management Institute of Leadership and Excellence - A Unit of LLPL
Account No.	5111793292
Type of Account	Current Account
Bank Name	Kotak Mahindra Bank Ltd.
Branch	Ramwadi, Pune - Nagar Road, Pune
IFSC Code	KKBK0000730

*Refund - As per Global Programme refund policy applicable to academic year 2022-23.

Disputes - All disputes are subject to Pune Jurisdiction only

MS, MBA, MBA (STEM) COURSE FEES

Part C: University of New Haven, USA Fees

Sr. No.	Particulars	Amount
1	Tuition Fees	a. MS \$14805 b. MBA \$17625 c. MBA STEM \$21855
2	General Fee (Full Time)	\$115 per Semester
3	Technology	\$45 per Semester
4	Student Health Insurance	\$1,500 per year
	Total Fees	MS = \$16465 MBA = \$19285 MBA STEM = \$23515

Account Details for UNH, US fees Payment will be provided separately after receiving Order Letter from UNH

LIFE AT LEXICON MANAGEMENT INSTITUTE OF LEADERSHIP & EXCELLENCE

Events at Lexicon MILE

TEDx

Lexicon Management Institute of Leadership & Excellence is a licensed TEDx organization. We hosted two spectacular TEDx Events. The themes of the first & second TEDx talk was "Believe in Yourself" & "Resilience" respectively.



The Lexicon Conclave on Diversity & Inclusion

"A diverse mix of voices leads to better discussions, decisions, and outcomes for everyone." – Sundar Pichai

Diversity and Inclusion are the corporate and hospitality buzzwords and critical to the success of Organizations. Every Organization is investing in building awareness on the same. We ought to agree, the diversity and inclusion conclave at Lexicon MILE was surely a know - how to approach diversity, equity, and inclusion.



International Conference

The International Conference on Glocal Evaluation – through and post COVID times was truly International. The conference received over 500 contributions with 233 research papers accepted. The papers were received from 7 countries across 4 continents.

The research papers from Corporates, Academics & Industry brought in impactful insights on the conference theme.

The conference was both enlightening, insightful and high on energy with great learning opportunities.



National Conference

The National Conference is an excellent platform to showcase research in relevant disciplines. It is an amalgamation of the research contributions by academicians, research scholars, students & corporates on a specific theme. The research papers presented at the National Conference are published in UGC CARE listed or SCOPUS listed journals giving the research publication the relevant exposure.

Investiture Ceremony

Investiture means investing a person with an official rank or honors. It is a prestigious ceremony wherein the student leaders are selected, a certain rank is given and the responsibilities are according to the assigned position. The Council President and the Council Vice-President are highest in hierarchy followed by the Student Council Members. The Student Council members are the best representatives from their respective batches w.r.t. conduct, behavior, and appearance and shoulder great responsibilities. The investiture ceremony involves an oath taking ceremony for all its members to stand true to all responsibilities assigned and be the perfect role models for their batch mates.



Academic Conclave, Convocation Ceremony & Alumni Meet

The Academic Conclave showcase a congregation of 15 plus Vice Chancellors of reputed Universities & Academic Council members on the theme, "Management Education: The Road Ahead." This elite gathering of learned minds illuminated the strategic path for the institute and students. The event highlighted an exhaustive debate between Campus & Corporate on relevant themes. The event was followed by the Convocation Ceremony of the outgoing batch and finally closed with the Alumni Meet in the evening. The Alumni Meet was an interactive forum where the present students met their respective alumni, exchanged experiences and memories.



Innovation Conclave

As Albert Einstein had once said, "You can't solve a problem on the same level that it was created. You have to rise above it to the next level." This forms the basis of the Innovation Conclave. The conclave showcases Innovations across various sectors and awards the notable ones on the basis of intensive parameters. Lexicon Management Institute of Leadership & Excellence facilitates bringing together of various innovators thus making it a dynamic learning event. Students gain immensely from this intellectual exposure.



HR-Conclave & Awards

The HR Conclave is based on a relevant HR theme and has prominent HR leaders from industries participating in it. It is an excellent forum for "campus to corporate connect" for students. The event targets relevant trends in HR both strategically and functionally, both at the national and international level. The focus is on skills, certifications, knowledge, abilities & attitude. The unique feature of the HR conclave is the "Lexicon Management Institute of Leadership & Excellence HR Awards" that emphasize and acknowledge notable HR Contributions based on the relevance and impact.



Lexicon Golf Cup

"Success in this game of Golf depends less on strength of body than strength of mind and character." Arnold Palmer
Golf is the game for Business Leaders. It is an excellent way to connect with them. This event gives an opportunity for the students to connect with business stalwarts all over the Golf Course during the event. The students are responsible for planning the travel, stay and coordination of the esteemed guests at the course. They also play a key role in managing the Golf Awards function held in the evening to honor the winners.



Business Connect

The Business Connect provides a forum for Corporate Leaders to discuss on various aspects of business, strategically. The participants are from varied and diverse backgrounds and the business connect provides insights on various aspects of business. This is a solution centric forum that encourages discussions to find solutions to relevant business issues and problems.



Next Gen Awards

The Next Gen awards by Lexicon Management Institute of Leadership & Excellence are focused on rewarding the next generation business leaders. The Awards are decided on by a panel of judges who deliberate on the contribution by the leader, their impact both socially and from a business perspective. This premium award is also showcased in various media on and immediately after the event.



Lexicon Cricket Cup

In India, nothing evokes euphoria like a game of cricket. 'Hooked' Cricket tournament as the name suggests brings about connection between the corporate members and the students. The team purchasing format is based on a similar format as IPL with various corporate houses selecting team members for their respective teams. This is an excellent exercise in event management and coordination for the students involved in organizing the event and great opportunity for networking and showcasing cricket talent.



Winter Internship Conclave

The Winter Internship Conclave showcases the exhaustive ten days research conducted by the students on behalf of Ministry of Forests, GoM in various remote forest locations throughout Maharashtra. The data is collected and converted into a research publication which provides strategic insights to the Ministry on the success, penetration, drawbacks and improvement areas of various governmental schemes. The report is presented to the representatives of Ministry of Forests, GoM in an official function showcasing presentations by the student teams followed by the actual submission of the report. The final reports are also submitted to the offices of the Chief Minister, Maharashtra and the Prime Minister's office.

Lexicon's Bharat Leadership Awards & Innovation Conclave

Lexicon Management Institute of Leadership & Excellence held a conclave that included leaders from various areas sharing their perspectives for the post-pandemic world and India's growth. These narratives on the nation's new normal growth story were shared by Shri Ramnath Subramaniam, Director, Maharashtra Metro Rail, Shri Ranjan Kumar Sharma, DIG, CID, Crime, Pune, Smt Kavita Dwivedi, Additional Commissioner & Additional CEO (Admin), Pune Metropolitan Region Development, Shri Shashank Bhushan, India Head & VP, BMC Software, Shri Nitin Chandel, Managing Director, BNY Mellon Technology, and Shri Francis Padamadan, Senior Director (APAC) RPO & BPS Practices, Kelly Outsourcing & Consulting Group. A select audience of students, industry leaders, and impact makers attended the event, to ensure social distancing norms and protocol, and it was moderated by Nasir Shaikh, Chief Executive Officer, The Lexicon Group of Institutes. The conclave discussed the importance of adaptability and innovation across the society and industry as we move towards realigning to the nation's path for growth.



Lexicon Heartbeats:

Our culture, our traditions, our language are the foundations upon which we build our identity. Culture is the process by which a person becomes all they are capable of being. With this aim, we celebrate our culture of togetherness and happiness. This gives students the essence of dynamic teamwork, leadership qualities, coordination, and organizational skills to face up the real-life challenges.



**TO VIEW OUR INSTAGRAM
SCAN THE QR CODE**

**TO VIEW OUR WEBSITE PHOTO GALLERY
SCAN THE QR CODE**



ABOUT PUNE

Pune is a sprawling city in the western Indian state of Maharashtra. It was once the base of the Peshwas of the Maratha Empire, which lasted from 1674 to 1818. It's known for the grand Aga Khan Palace, built in 1892 and now a memorial to Mahatma Gandhi, whose ashes are preserved in the garden. The 8th-century Pataleshwar Cave Temple is dedicated to Lord Shiva.

Pune is the second largest city in the Indian state of Maharashtra and the seventh most populous city in the country. Considered to be the cultural capital of Maharashtra, Pune is known as “Oxford of the East” due to the presence of several well-known educational institutions in the city. The city has emerged as a major educational hub in recent decades, with nearly half of the total international students in the country studying in Pune. Since the 1950s and 1960s, Pune has had a traditional old-economic base as most of the old industries continue to grow.

The city is known for its manufacturing and automobile industries, as well as for research institutes of information technology (IT), education, management and training, which attracts students, and professionals from India, South East Asia, the Middle East and Africa. Several colleges in Pune have student-exchange programs with colleges in Europe.

Pune is one of the fastest growing cities in the Asia-Pacific region. The ‘Mercer 2019 Quality of Living Rankings’ evaluated living conditions in more than 231 cities around the world and ranked Pune at 143, first in India along with Hyderabad. The same source highlights Pune among evolving business centres and nine emerging cities around the world with the citation “Hosts IT and automotive companies.”



LEXICON CARES

Measures for the New Normal

**An ounce of prevention is better than a pound of cure
- Benjamin Franklin**

What is the Lexicon Cares Program?

Lexicon Cares are guidelines for the New Normal. An effort to create fearless learning environment which is responsible, accountable and safe.

A program for the awareness, safety and security of all our Stakeholders i.e Students, Faculty, Team Members, Guests, Partners and Vendors. Lexicon Cares supports the efforts of our government in fighting COVID-19.

Steps and Measures taken by us -

- E-classes till AICTE norms allow physical presence.
- Arrival Sanitizing Tunnel.
- Temperature Check.
- Entry with mask only.
- Contactless Biometrics.
- Sanitiser stations in every section.
- Social Distancing.
- Timetable will be aligned to ensure social distancing is in place in classrooms.
- Flexible use of Fan/Airconditioning.
- Clinical standard of cleaning and sanitization of Institute premises.
- Facilitation of students and faculty vaccination





Lexicon
Institute of
Hotel Management

For Admission Enquiries:

☎ +91 8956059559

✉ admission_lexiconihm@lexiconedu.in

SCAN TO APPLY



**The
Lexicon
Schools**

For Admission Enquiries:

The Lexicon International School, Wagholi

☎ +91 8007363070

✉ office_wgh@lexiconedu.in

**The Lexicon International School,
Kalyaninagar**

☎ +91 8412839287 | 020-26655812

✉ admin_kln@lexicon.in

The Lexicon School, Hadapsar

☎ +91 9552315075

✉ admintls@lexicon.in

SCAN TO APPLY



Lexicon kids
Learning • Growing • Excelling • Innovating
A Pre-school For 1.6 Years Onwards

For Admission Enquiries:

☎ +91 9766622078 | +91 8087058396

✉ admissionsmanager@lexiconedu.in

SCAN TO APPLY



Lexicon
Rainbow
Learning • Growing • Excelling • Innovating
Service for Special needs

For Admission Enquiries:

☎ +91 70669 00641

✉ admissions.rainbow@lexiconedu.in

SCAN TO APPLY





Lexicon
Management Institute
of Leadership & Excellence

SCAN TO APPLY

Website link to apply

<https://lexicon.nopaperforms.com/>



For PGDM Admission Enquiries:

+91 9146014950

+91 9717536537

admissions@mile.education

For Global MBA Admission Enquiries:

+91 9591240211

globalmbaadmissions@mile.education

www.lexiconmile.com [@LexiconMILE](https://www.facebook.com/LexiconMILE) [@lexicon_mile](https://www.instagram.com/lexicon_mile) [@lexicon-mile](https://www.linkedin.com/company/lexicon-mile)

For Other Queries:

+91 9146014951

info@mile.education